



THE WILLIAMSBURG

LOUDERMILK
CUSTOM HOMES

www.loudermilkhomes.com | office: 770.485.2600 | email: info@loudermilkhomes.com
1827 Powers Ferry Road, Building 6, Atlanta, GA 30339



LOUDERMILK
CUSTOM HOMES

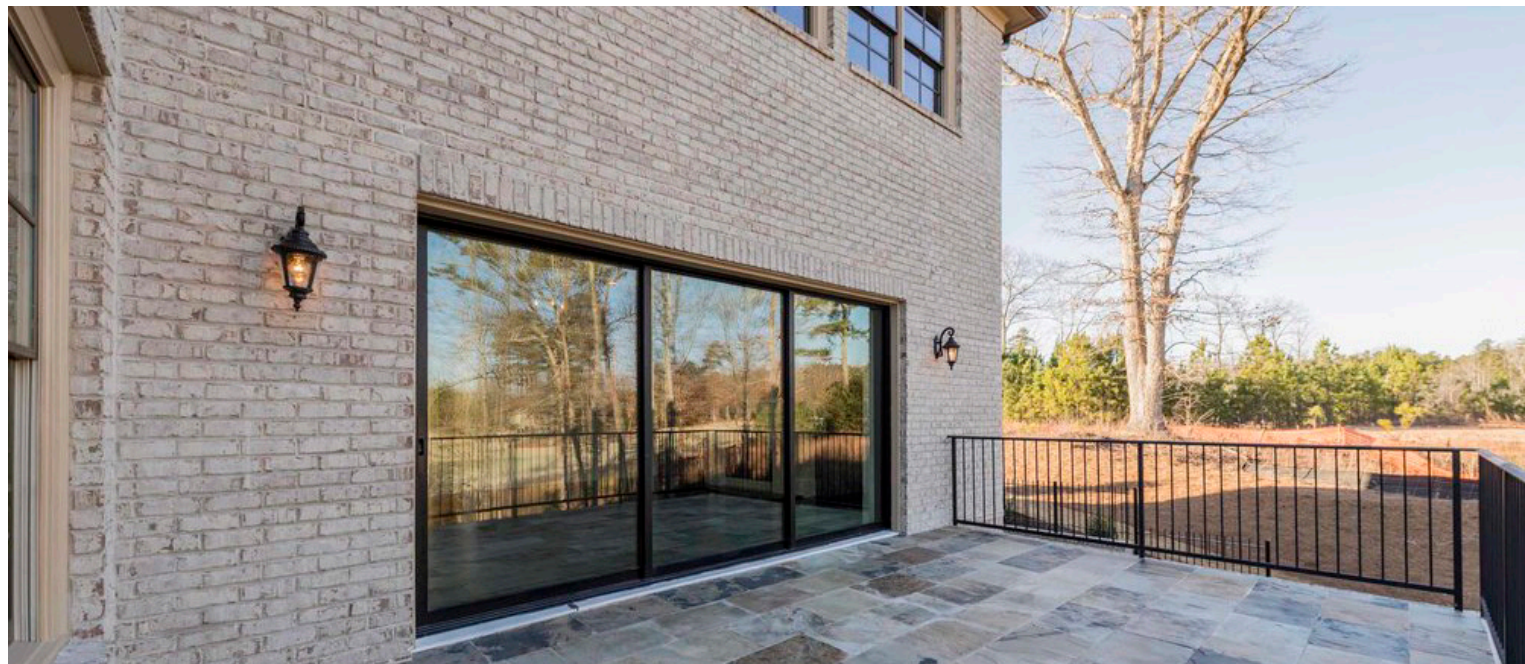
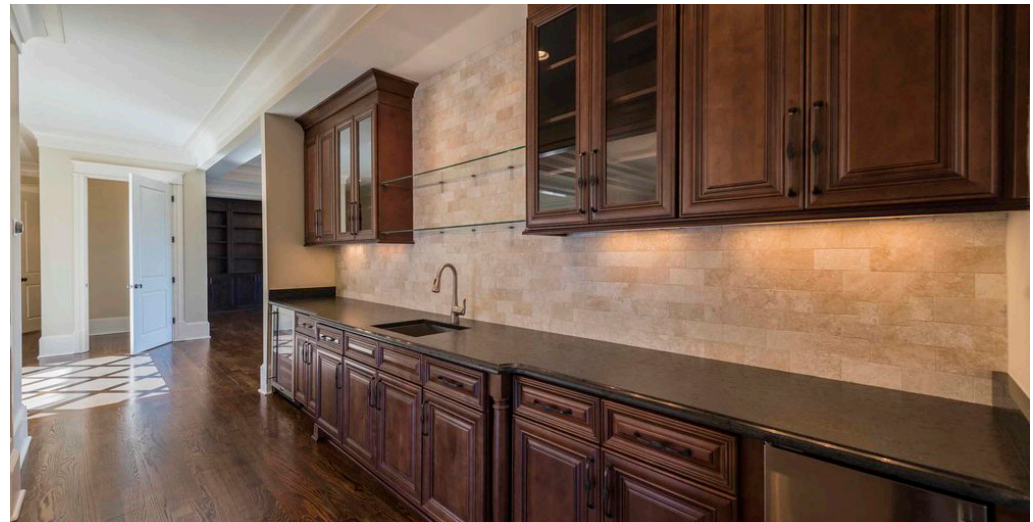
THE WILLIAMSBURG





LOUDERMILK
CUSTOM HOMES

THE WILLIAMSBURG





LOUDERMILK
CUSTOM HOMES

THE WILLIAMSBURG

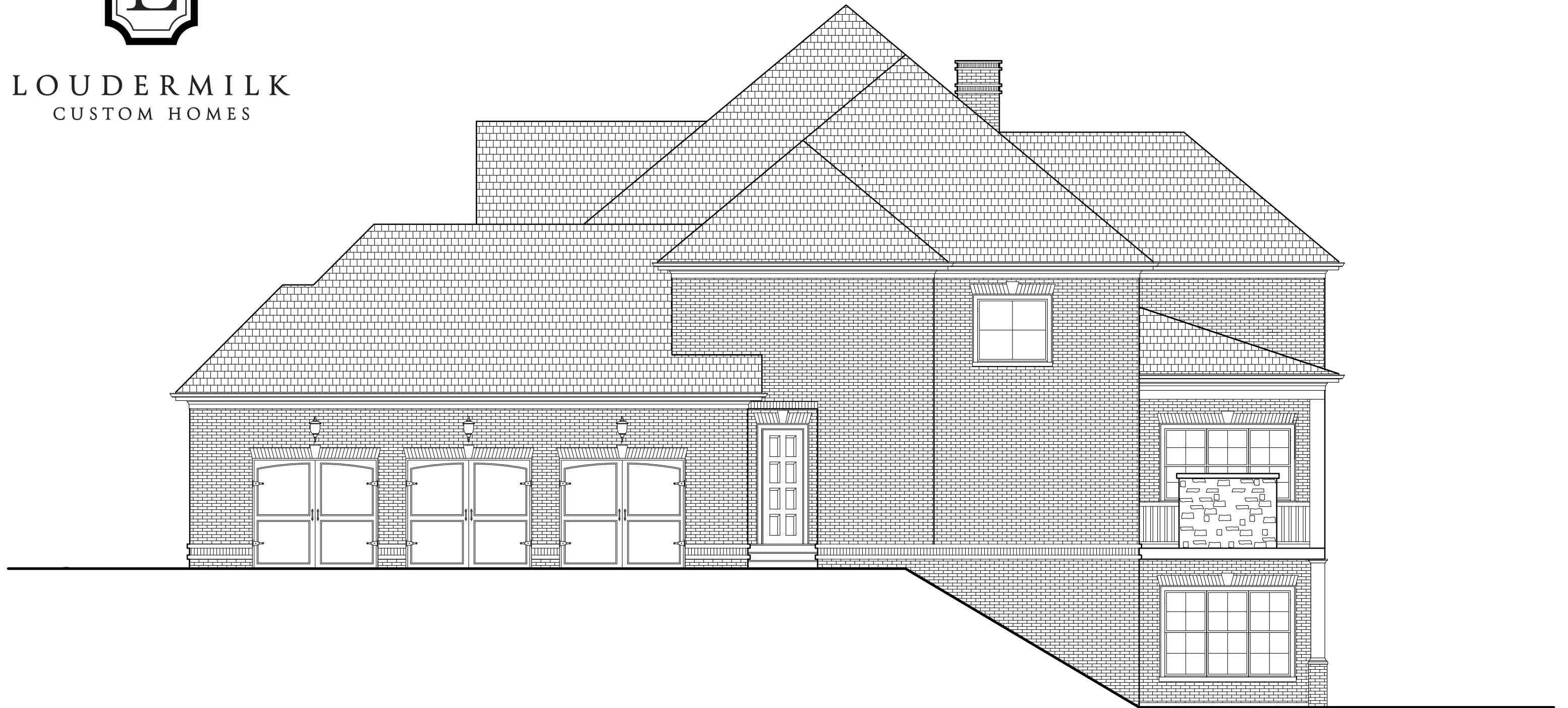


FRONT ELEVATION www.loudermilkhomes.com | office: 770.485.2600 | email: info@loudermilkhomes.com
1827 Powers Ferry Road, Building 6, Atlanta, GA 30339



LOUDERMILK
CUSTOM HOMES

THE WILLIAMSBURG



RIGHT ELEVATION

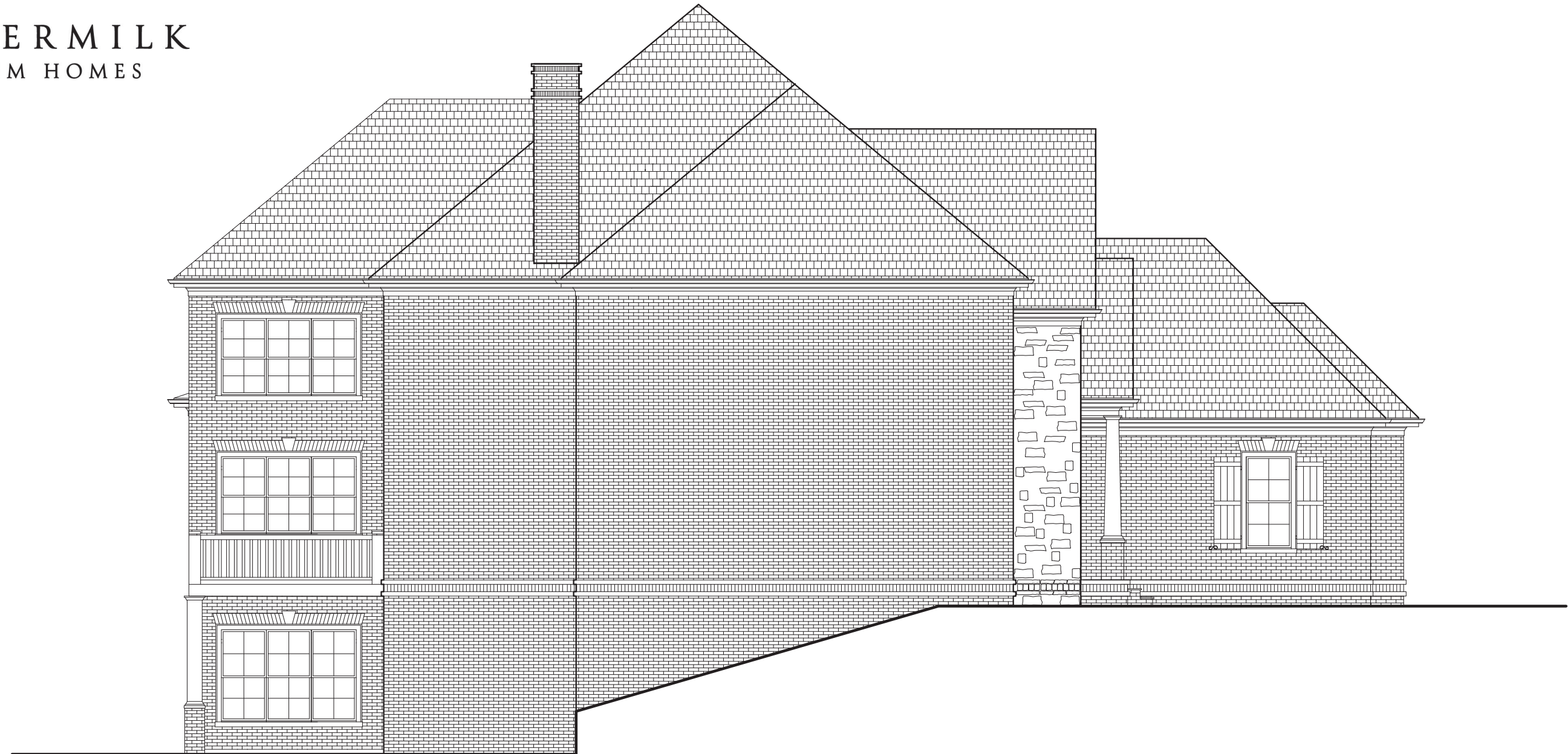
www.loudermilkhomes.com | office: 770.485.2600 | email: info@loudermilkhomes.com

1827 Powers Ferry Road, Building 6, Atlanta, GA 30339



LOUDERMILK
CUSTOM HOMES

THE WILLIAMSBURG



LEFT ELEVATION

www.loudermilkhomes.com | office: 770.485.2600 | email: info@loudermilkhomes.com
1827 Powers Ferry Road, Building 6, Atlanta, GA 30339



LOUDERMILK
CUSTOM HOMES

THE WILLIAMSBURG



REAR ELEVATION

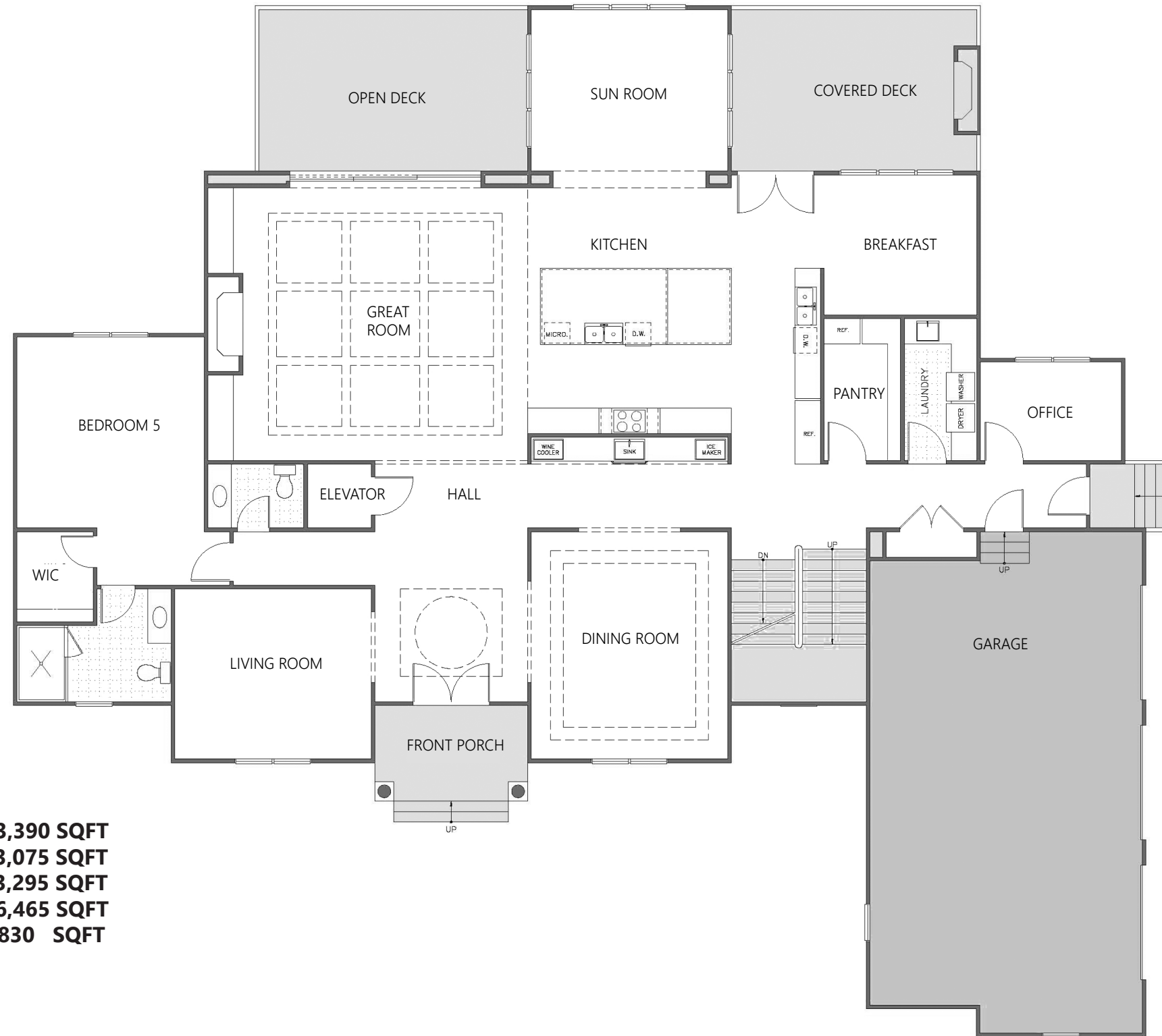
www.loudermilkhomes.com | office: 770.485.2600 | email: info@loudermilkhomes.com

1827 Powers Ferry Road, Building 6, Atlanta, GA 30339



LOUDERMILK
CUSTOM HOMES

THE WILLIAMSBURG



SQUARE FOOTAGE:

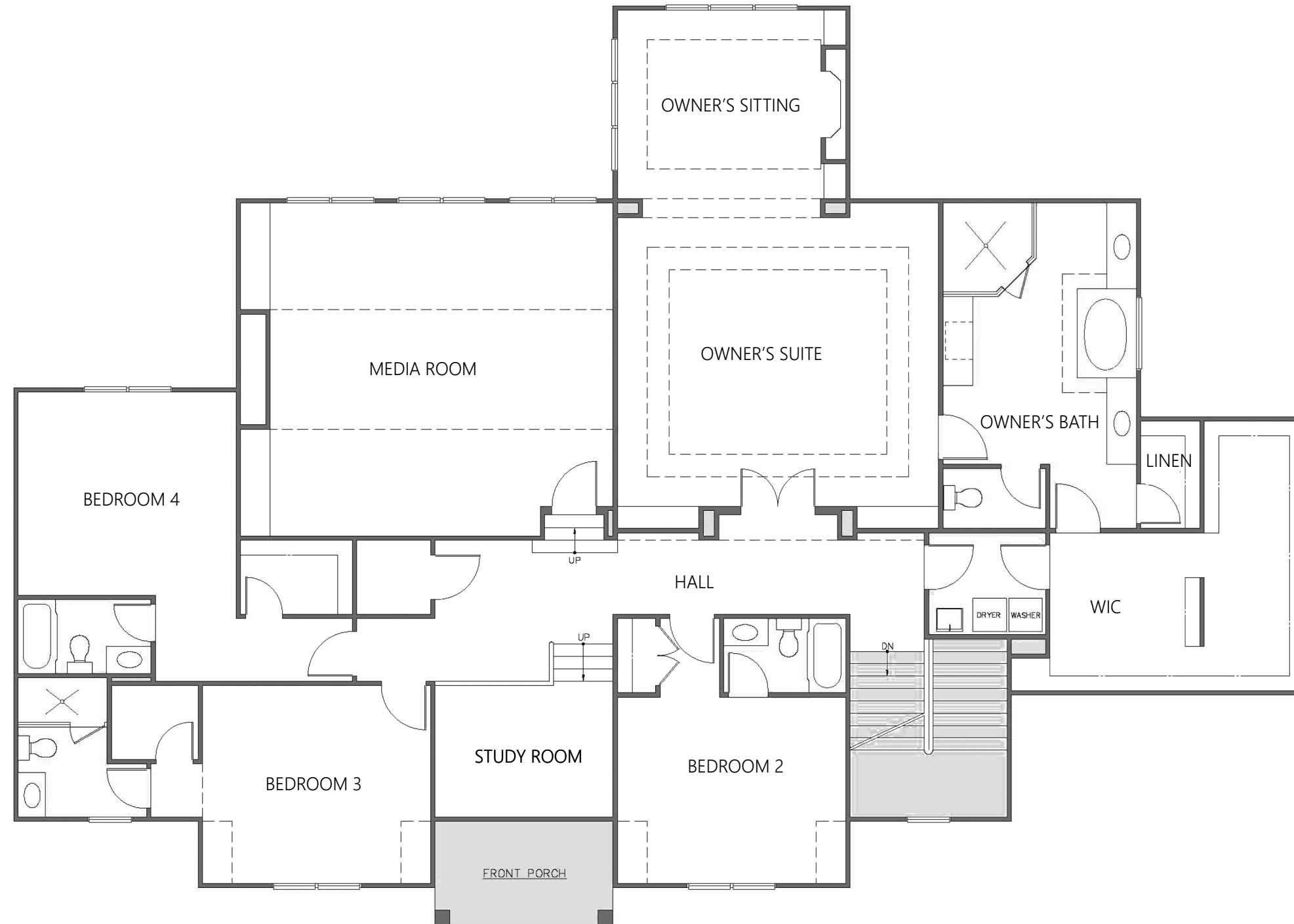
FIRST FLOOR AREA: 3,390 SQFT
SECOND FLOOR AREA: 3,075 SQFT
BASEMENT FLOOR PLAN: 3,295 SQFT
TOTAL HEATED FLOOR AREA: 6,465 SQFT
GARAGE AREA: 830 SQFT

FIRST FLOOR PLAN www.loudermilkhomes.com | office: 770.485.2600 | email: info@loudermilkhomes.com
1827 Powers Ferry Road, Building 6, Atlanta, GA 30339



LOUDERMILK
CUSTOM HOMES

THE WILLIAMSBURG

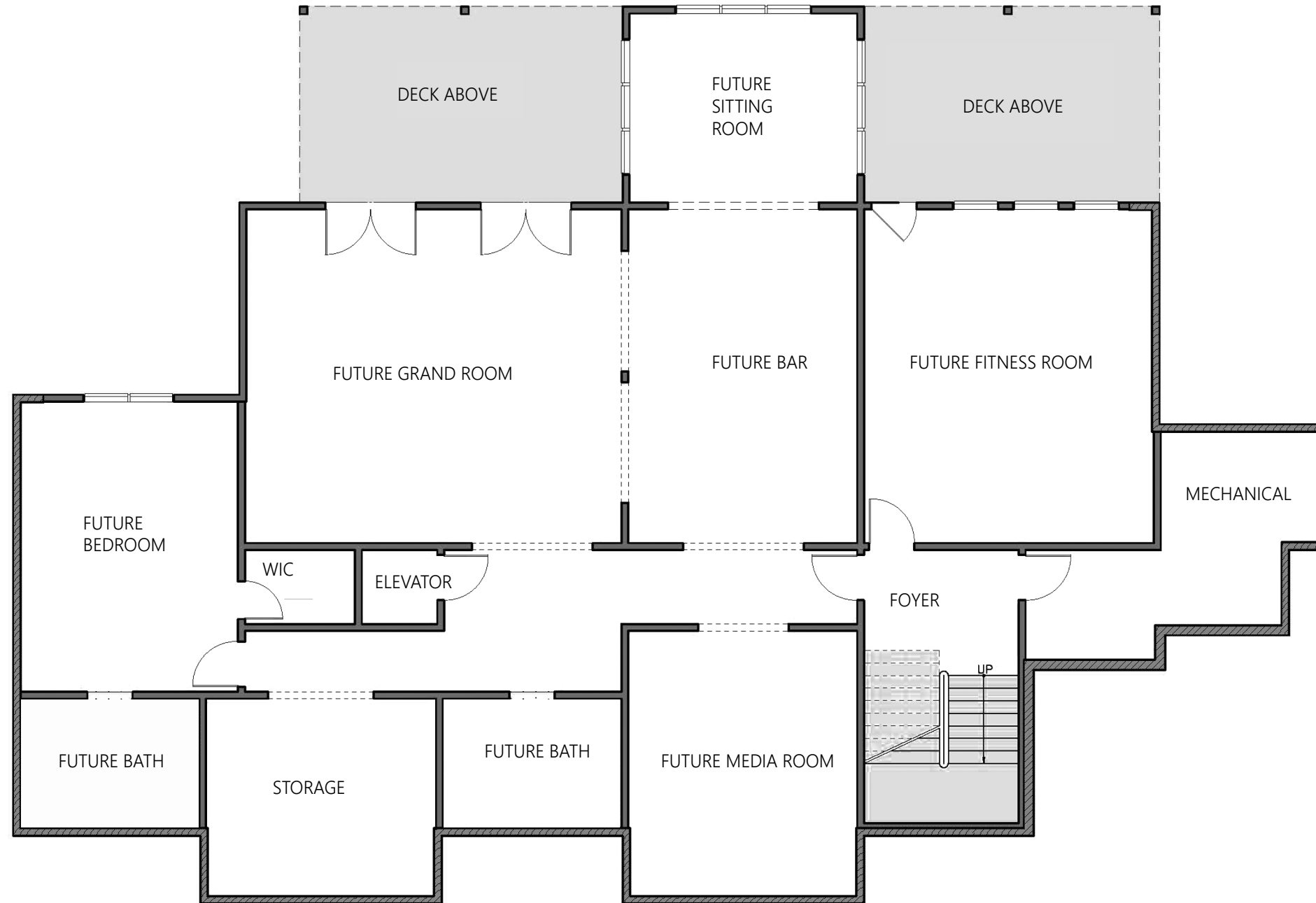


SECOND FLOOR PLAN www.loudermilkhomes.com | office: 770.485.2600 | email: info@loudermilkhomes.com
1827 Powers Ferry Road, Building 6, Atlanta, GA 30339



LOUDERMILK
CUSTOM HOMES

THE WILLIAMSBURG



BASEMENT FLOOR
PLAN

www.loudermilkhomes.com | office: 770.485.2600 | email: info@loudermilkhomes.com
1827 Powers Ferry Road, Building 6, Atlanta, GA 30339