



THE PLACID

LOUDERMILK
CUSTOM HOMES

www.loudermilkhomes.com | office: 770.485.2600 | email: info@loudermilkhomes.com
1827 Powers Ferry Road, Building 6, Atlanta, GA 30339



LOUDERMILK
CUSTOM HOMES

THE PLACID





LOUDERMILK
CUSTOM HOMES

THE PLACID





LOUDERMILK
CUSTOM HOMES

THE PLACID



FRONT ELEVATION www.loudermilkhomes.com | office: 770.485.2600 | email: info@loudermilkhomes.com
1827 Powers Ferry Road, Building 6, Atlanta, GA 30339



LOUDERMILK
CUSTOM HOMES

THE PLACID



LEFT ELEVATION

www.loudermilkhomes.com | office: 770.485.2600 | email: info@loudermilkhomes.com
1827 Powers Ferry Road, Building 6, Atlanta, GA 30339



LOUDERMILK
CUSTOM HOMES

THE PLACID



RIGHT ELEVATION

www.loudermilkhomes.com | office: 770.485.2600 | email: info@loudermilkhomes.com

1827 Powers Ferry Road, Building 6, Atlanta, GA 30339



LOUDERMILK
CUSTOM HOMES

THE PLACID



REAR ELEVATION

www.loudermilkhomes.com | office: 770.485.2600 | email: info@loudermilkhomes.com
1827 Powers Ferry Road, Building 6, Atlanta, GA 30339

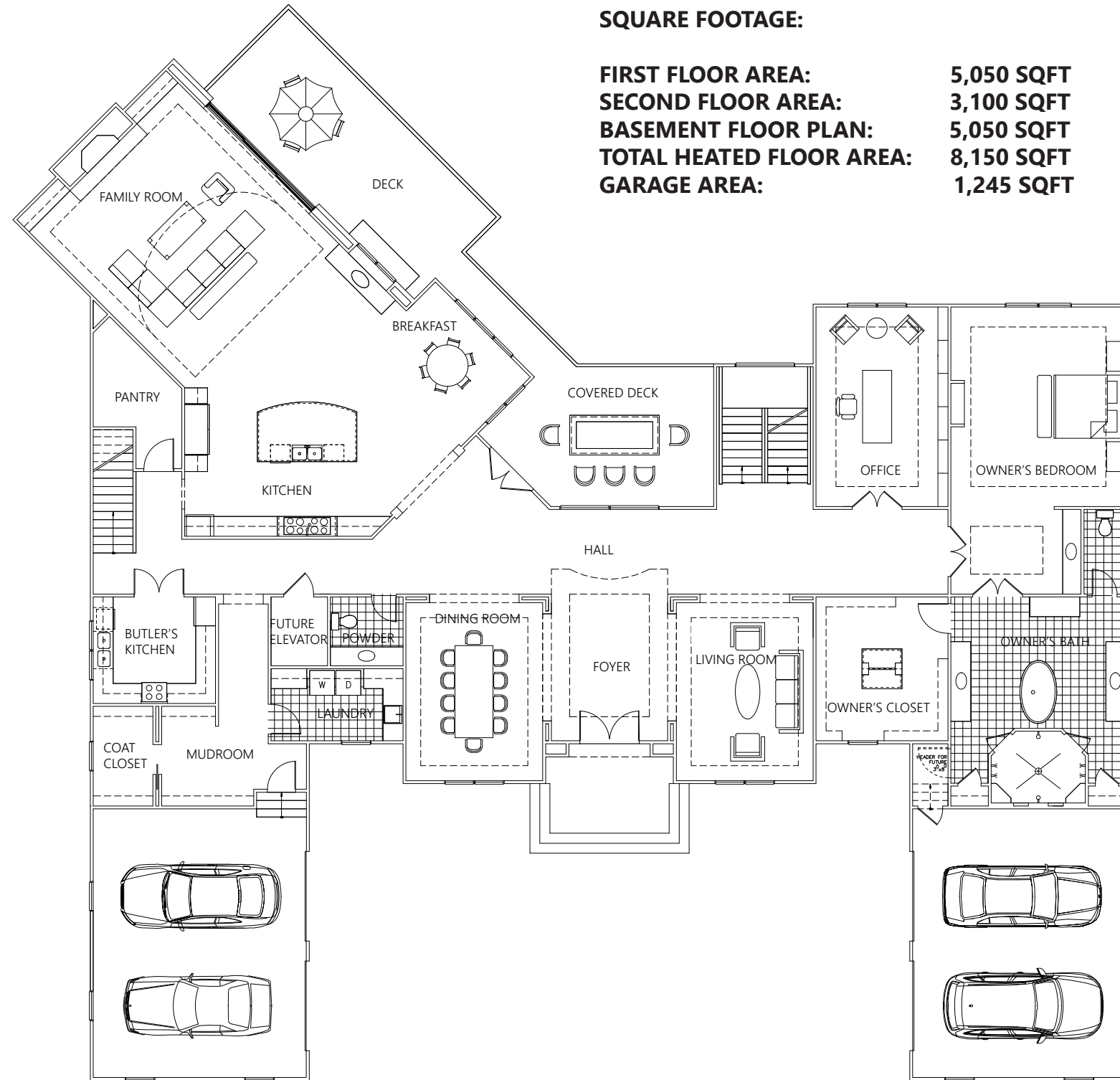


LOUDERMILK
CUSTOM HOMES

THE PLACID

SQUARE FOOTAGE:

| | |
|--------------------------|------------|
| FIRST FLOOR AREA: | 5,050 SQFT |
| SECOND FLOOR AREA: | 3,100 SQFT |
| BASEMENT FLOOR PLAN: | 5,050 SQFT |
| TOTAL HEATED FLOOR AREA: | 8,150 SQFT |
| GARAGE AREA: | 1,245 SQFT |



FIRST FLOOR PLAN

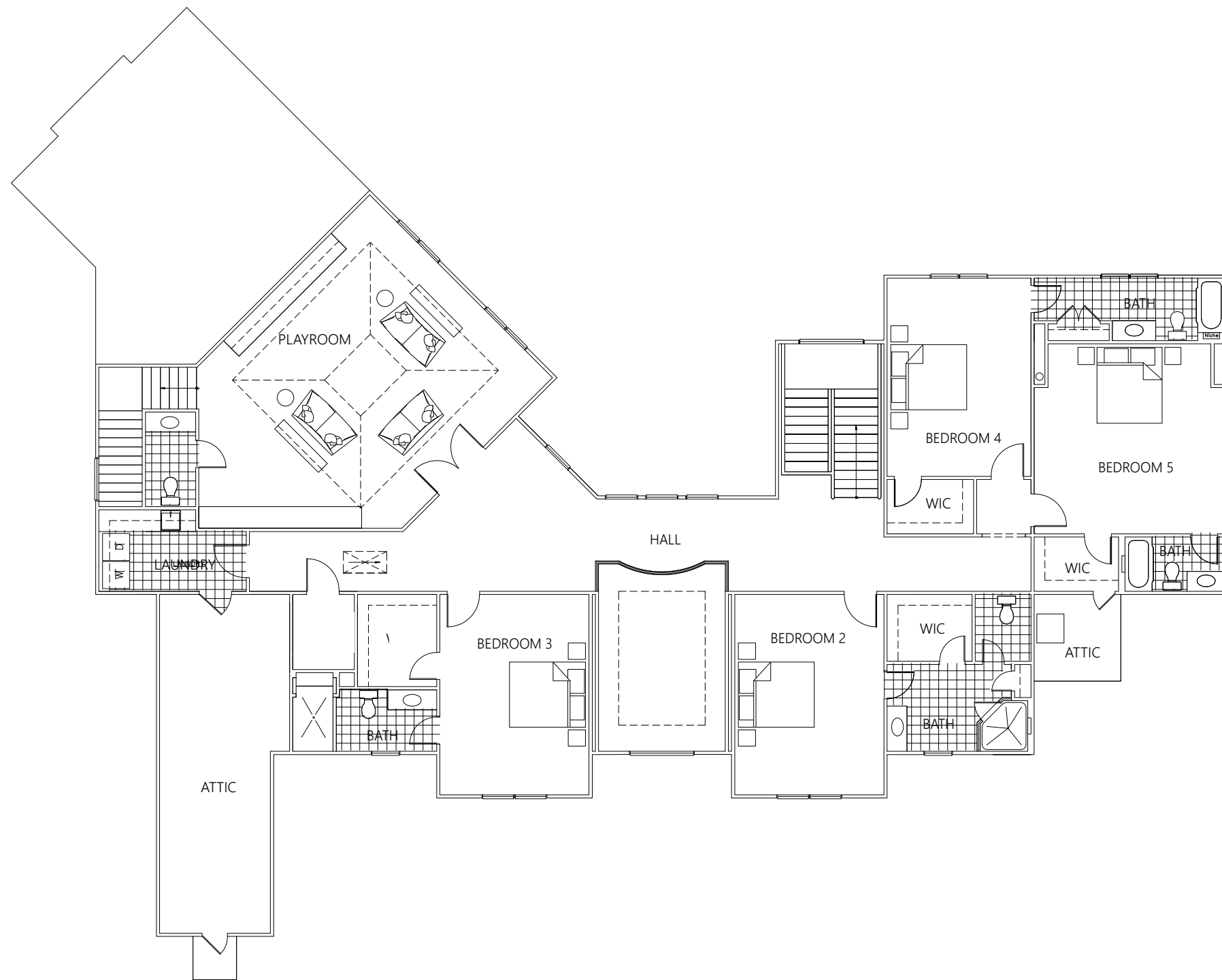
www.loudermilkhomes.com | office: 770.485.2600 | email: info@loudermilkhomes.com

1827 Powers Ferry Road, Building 6, Atlanta, GA 30339



LOUDERMILK
CUSTOM HOMES

THE PLACID

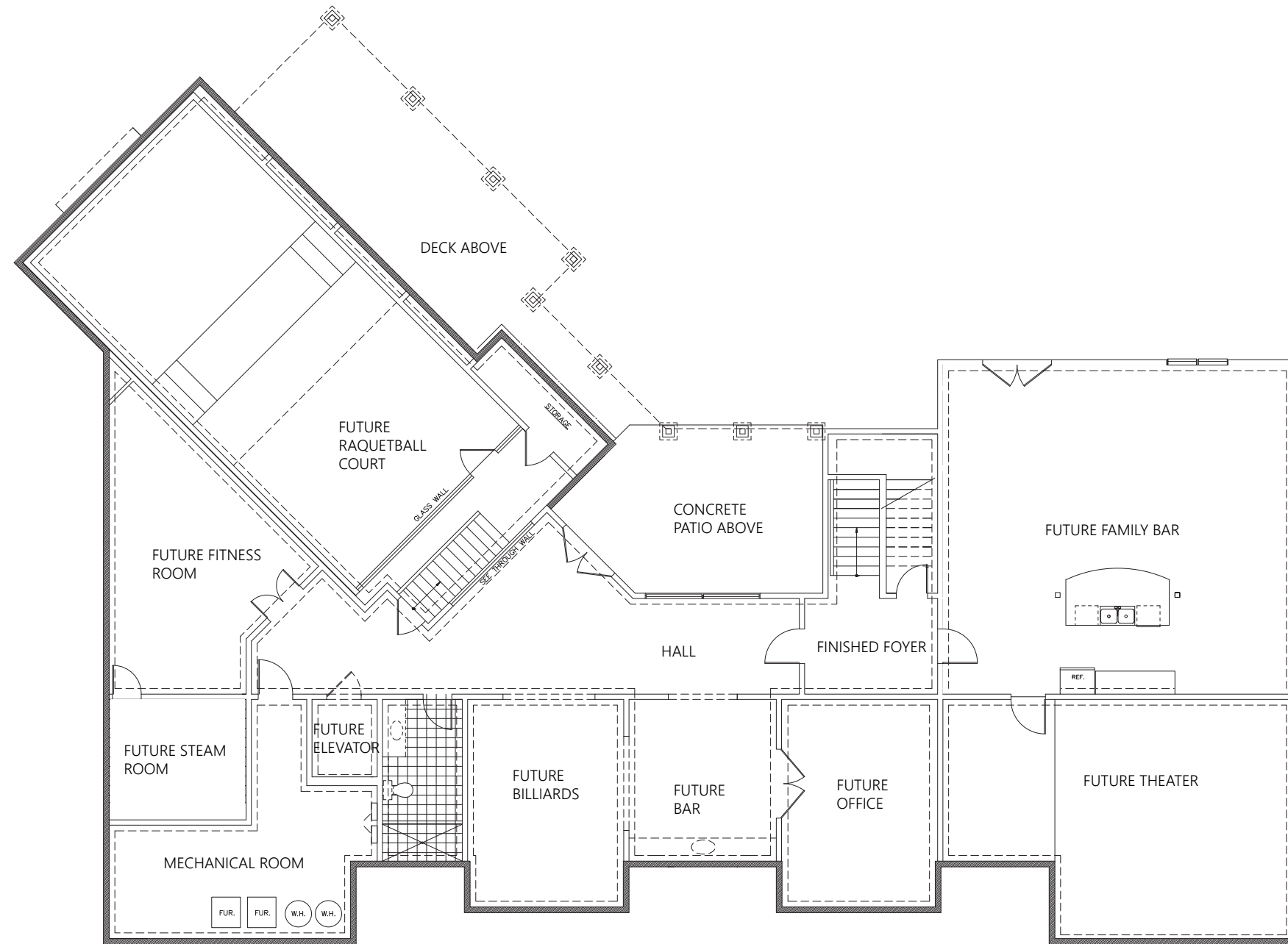


SECOND FLOOR PLAN www.loudermilkhomes.com | office: 770.485.2600 | email: info@loudermilkhomes.com
1827 Powers Ferry Road, Building 6, Atlanta, GA 30339



LOUDERMILK
CUSTOM HOMES

THE PLACID



BASEMENT FLOOR
PLAN

www.loudermilkhomes.com | office: 770.485.2600 | email: info@loudermilkhomes.com
1827 Powers Ferry Road, Building 6, Atlanta, GA 30339