



THE ASHLAND 1

LOUDERMILK
CUSTOM HOMES

www.loudermilkhomes.com | office: 770.485.2600 | email: info@loudermilkhomes.com
1827 Powers Ferry Road, Building 6, Atlanta, GA 30339



THE ASHLAND 1

LOUDERMILK
CUSTOM HOMES





THE ASHLAND 1

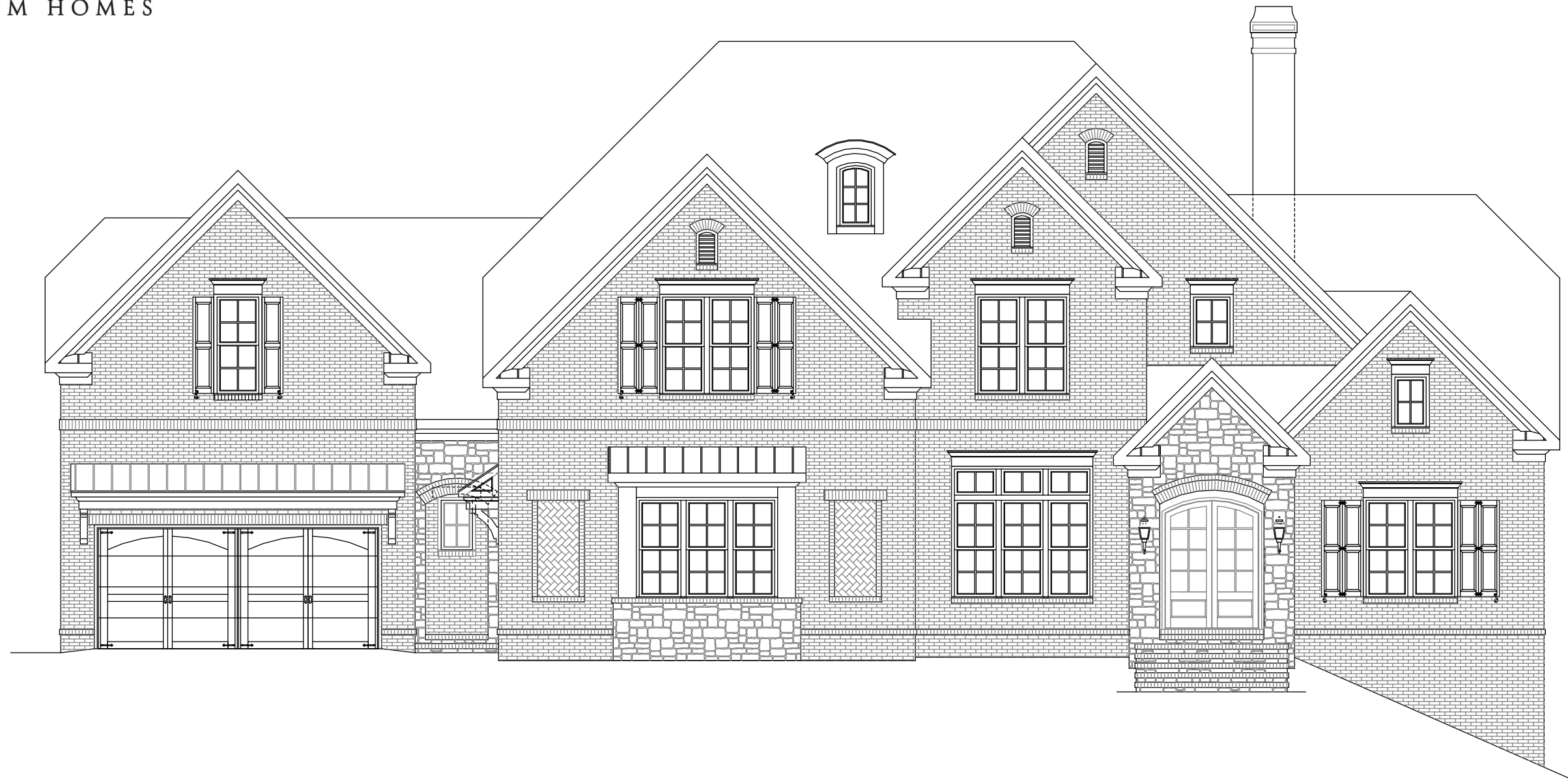
LOUDERMILK
CUSTOM HOMES





THE ASHLAND 1

LOUDERMILK
CUSTOM HOMES



FRONT ELEVATION www.loudermilkhomes.com | office: 770.485.2600 | email: info@loudermilkhomes.com
1827 Powers Ferry Road, Building 6, Atlanta, GA 30339



LOUDERMILK
CUSTOM HOMES

THE ASHLAND 1



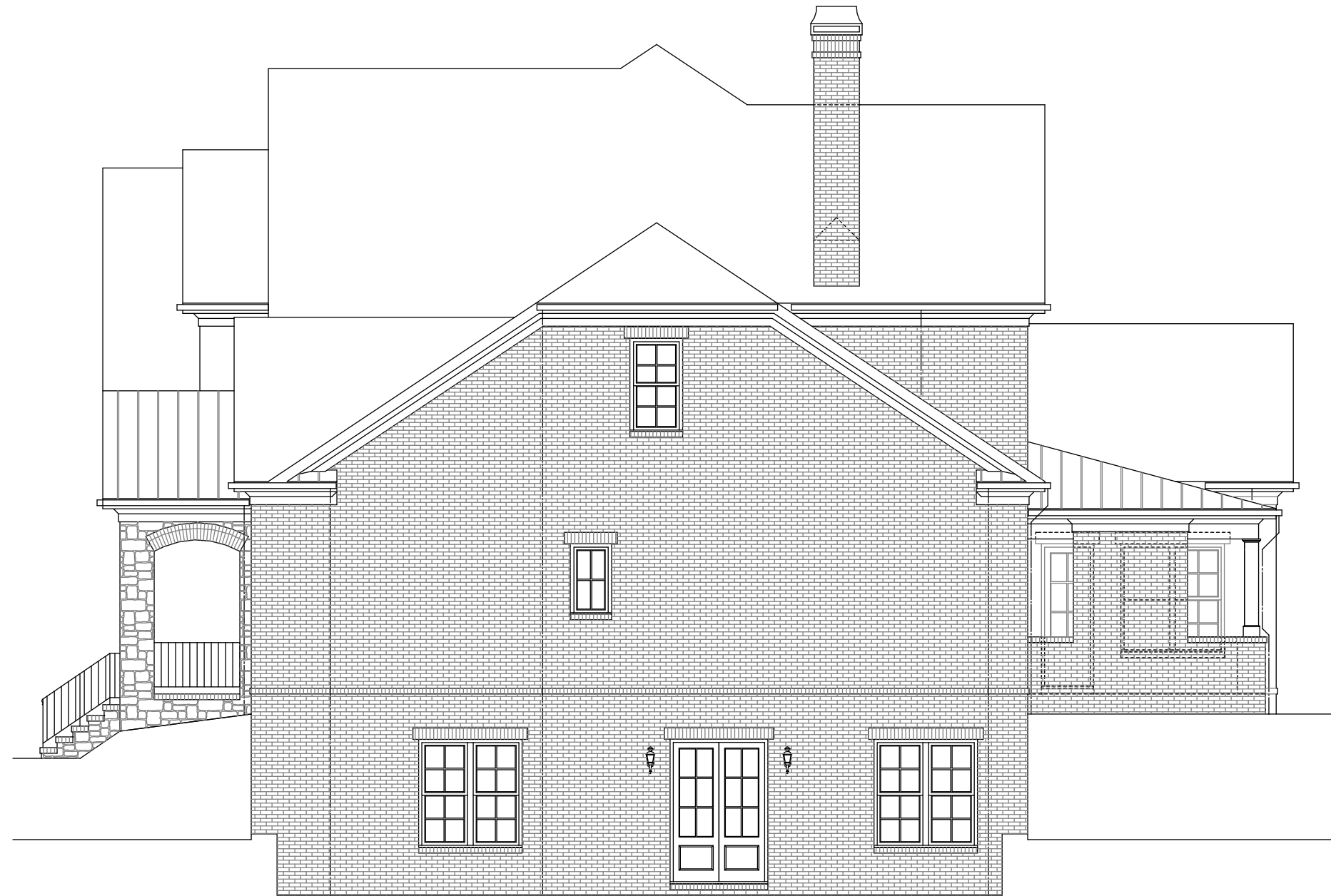
LEFT ELEVATION

www.loudermilkhomes.com | office: 770.485.2600 | email: info@loudermilkhomes.com
1827 Powers Ferry Road, Building 6, Atlanta, GA 30339



LOUDERMILK
CUSTOM HOMES

THE ASHLAND 1



RIGHT ELEVATION

www.loudermilkhomes.com | office: 770.485.2600 | email: info@loudermilkhomes.com
1827 Powers Ferry Road, Building 6, Atlanta, GA 30339



LOUDERMILK
CUSTOM HOMES

THE ASHLAND 1



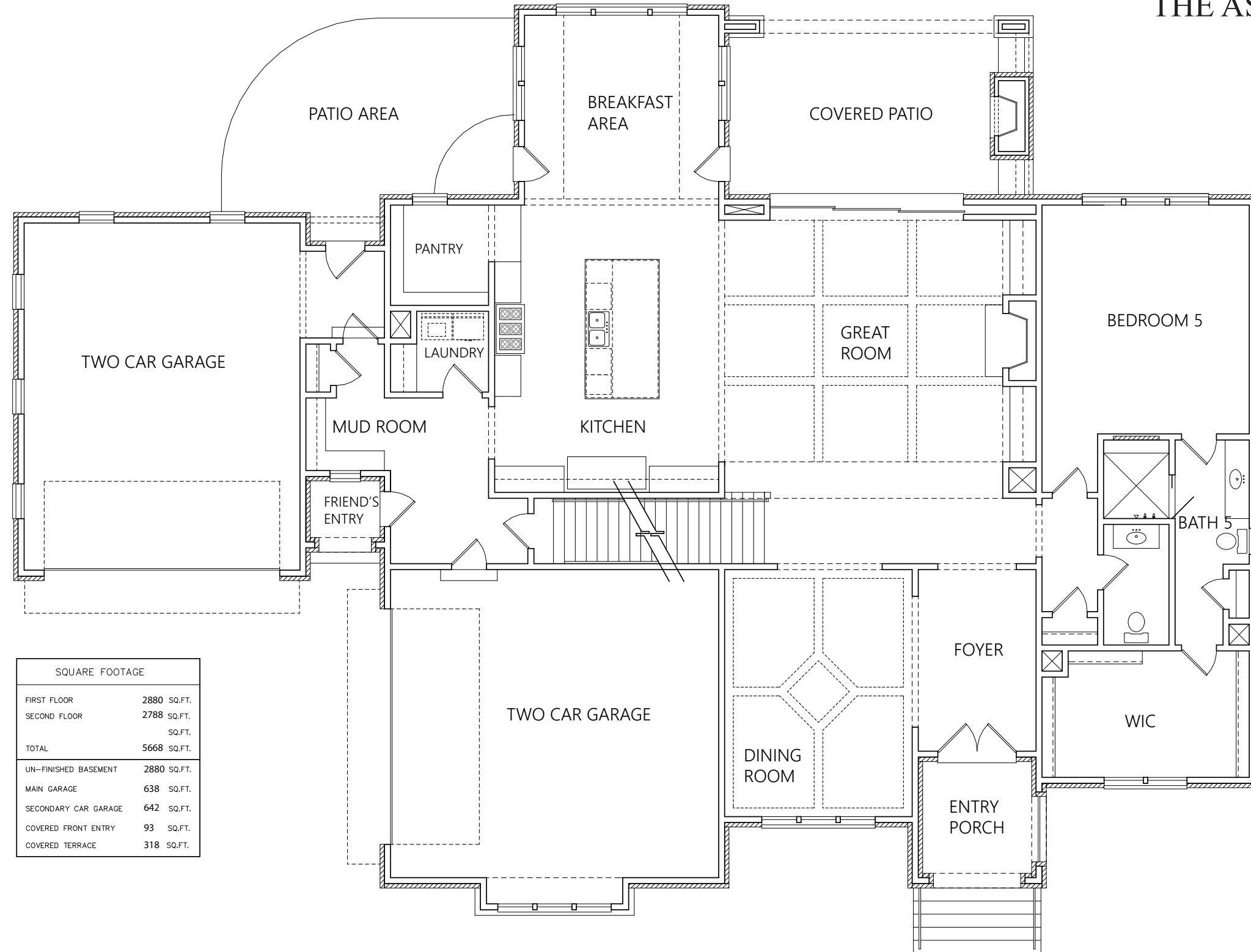
REAR ELEVATION

www.loudermilkhomes.com | office: 770.485.2600 | email: info@loudermilkhomes.com
1827 Powers Ferry Road, Building 6, Atlanta, GA 30339



LOUDERMILK
CUSTOM HOMES

THE ASHLAND 1



SQUARE FOOTAGE	
FIRST FLOOR	2880 SQ.FT.
SECOND FLOOR	2788 SQ.FT.
TOTAL	5668 SQ.FT.
UN-FINISHED BASEMENT 2880 SQ.FT.	
MAIN GARAGE	638 SQ.FT.
SECONDARY CAR GARAGE	642 SQ.FT.
COVERED FRONT ENTRY	93 SQ.FT.
COVERED TERRACE	318 SQ.FT.

FIRST FLOOR PLAN

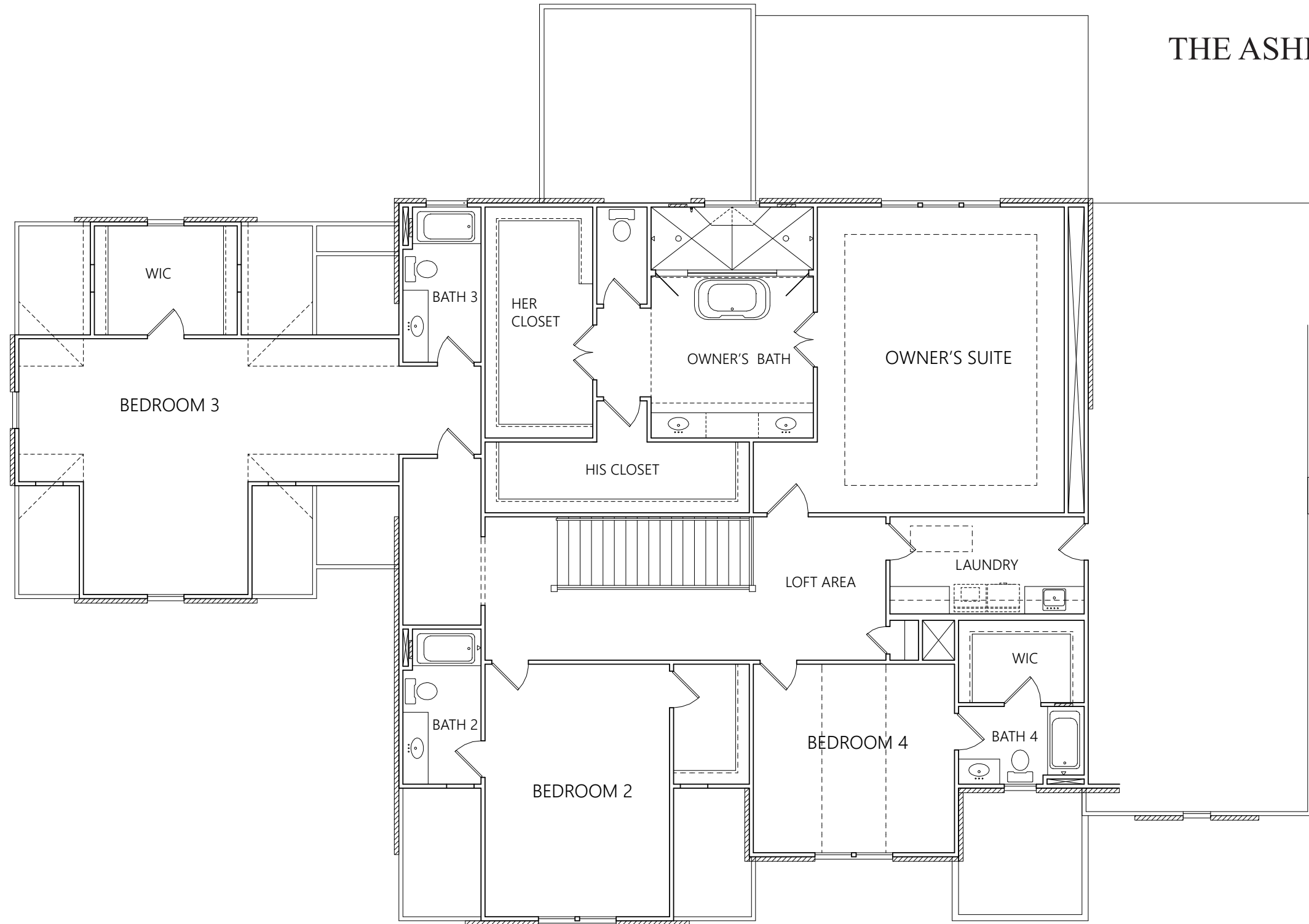
www.loudermilkhomes.com | office: 770.485.2600 | email: info@loudermilkhomes.com

1827 Powers Ferry Road, Building 6, Atlanta, GA 30339



LOUDERMILK
CUSTOM HOMES

THE ASHLAND 1

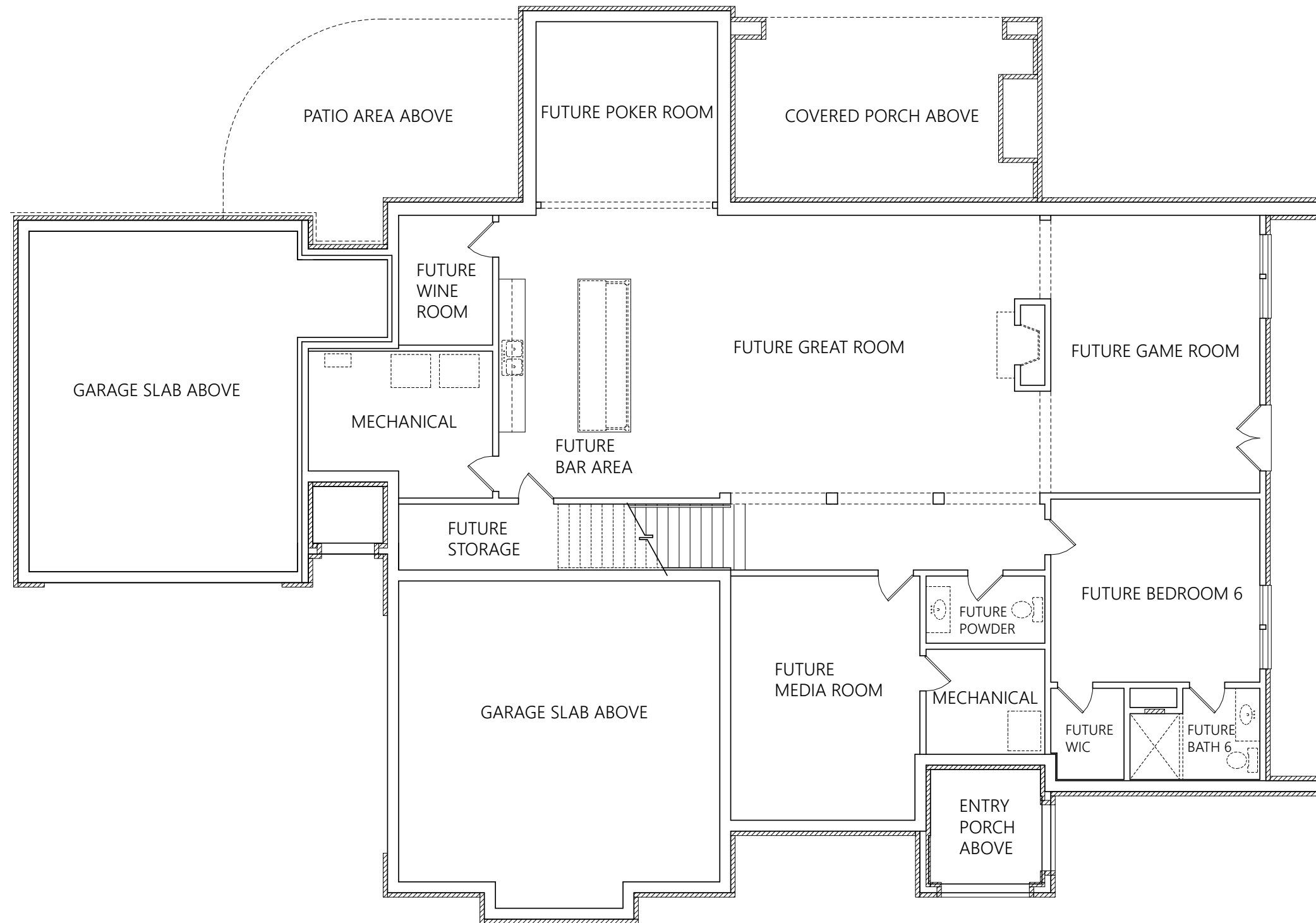


SECOND FLOOR PLAN www.loudermilkhomes.com | office: 770.485.2600 | email: info@loudermilkhomes.com
1827 Powers Ferry Road, Building 6, Atlanta, GA 30339



LOUDERMILK
CUSTOM HOMES

THE ASHLAND 1



BASEMENT FLOOR
PLAN

www.loudermilkhomes.com | office: 770.485.2600 | email: info@loudermilkhomes.com
1827 Powers Ferry Road, Building 6, Atlanta, GA 30339