



LOUDERMILK

CUSTOM HOMES

THE ASTER

Architecture and landscape renderings do not reflect finished selections

www.loudermilkhomes.com | office: 700.485.2600 | email: info@loudermilkhomes.com

1827 Powers Ferry Road, Building 6, Atlanta, GA 30339



LOUDERMILK
CUSTOM HOMES

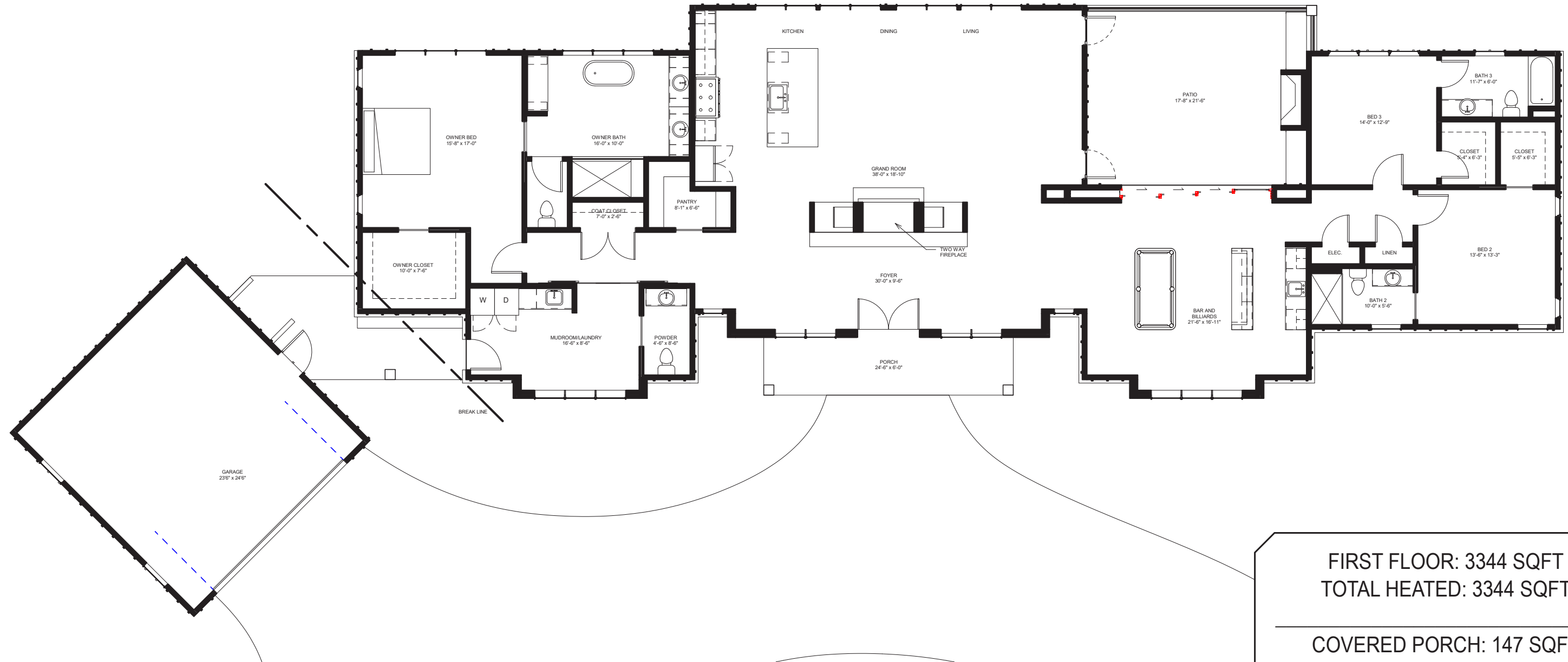


Architecture and landscape renderings do not reflect finished selections

LOUDERMILK

CUSTOM HOMES

THE ASTER



FIRST FLOOR: 3344 SQFT
TOTAL HEATED: 3344 SQFT

COVERED PORCH: 147 SQFT
COVERED PATIO: 370 SQFT
GARAGE: 624 SQFT

TOTAL UNDER ROOF; 4338 SQFT

LOUDERMILK

CUSTOM HOMES

THE ASTER



FRONT ELEVATION

LOUDERMILK

CUSTOM HOMES

THE ASTER



REAR ELEVATION