

LOT # 314

DRAWING LIST	
SHT	DESCRIPTION
1.1	COVER SHEET
2.1	PARTIAL FRONT ELEVATION
2.2	PARTIAL FRONT ELEVATION
2.3	RIGHT SIDE ELEVATION
2.4	LEFT SIDE ELEVATION
2.5	REAR ELEVATION
2.6	REAR ELEVATION
3.1	PARTIAL SLAB PLAN
3.2	PARTIAL SLAB PLAN
3.3	PARTIAL BASEMENT PLAN
3.4	PARTIAL BASEMENT PLAN
4.1	PARTIAL FIRST FLOOR
4.2	PARTIAL FIRST FLOOR
4.3	PARTIAL SECOND FLOOR
4.4	PARTIAL SECOND FLOOR
5.1	PARTIAL ROOF PLAN
5.2	PARTIAL ROOF PLAN
6.1	PARTIAL FIRST FLOOR ELECTRICAL
6.2	PARTIAL FIRST FLOOR ELECTRICAL
6.3	PARTIAL SECOND FLOOR ELECTRICAL
6.4	PARTIAL SECOND FLOOR ELECTRICAL
7.1	SECTIONS & DETAILS
7.2	SECTIONS & DETAILS

[illegible]

I. DESIGN LOADS	
First Floor	40 p.s.f. live load 10 p.s.f. dead load
Second Floor	40 p.s.f. live load 10 p.s.f. dead load
Roof	25 p.s.f. live load 10 p.s.f. dead load
Deck	40 p.s.f. live load 10 p.s.f. dead load
Soil Pressure	2500 p.s.f.
Basic Wind Speed 90 mph	
Note:	Verify design loads with local codes & site conditions. Check with local building dept. officials for specific loading condition.

II. CARPENTRY

- A. All 2x8's & 2x10's to be SYP #2, all 2x6's rafters to be SYP #3 unless otherwise noted. Framing lumber shall be Southern Pine #3 KD.
- B. All wall plates to be # 2 or better S.P.F.
- C. Laminated veneer lumber beams (LVL) design values are: fb=2800p.s.i., E=2,000,000 p.s.i. Members with equal or greater design values may be substituted. Minimum 3 cripple studs at each end unless otherwise noted on plan.

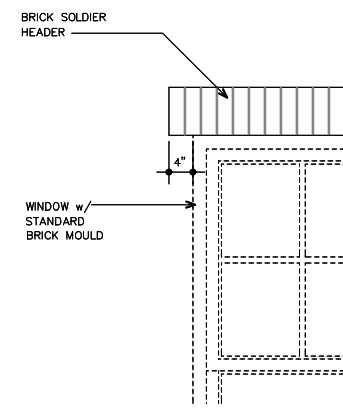
III. Applicable Building Codes:

International Building Code, 2012 Edition, with Georgia Amendments, (2014) (2015) (2017) (2018)
National Electrical Code, 2017 Edition
International Fire Code, 2012 Edition, with Georgia Amendments, (2014)
International Plumbing Code, 2012 Edition, with Georgia Amendments, (2014) (2015)
International Energy Conservation Code, 2009 Edition, with Georgia Supplements and Amendments (2011) (2012)
International Residential Code, 2012 Edition, with Georgia Amendments, (2014) (2015) (2018)
International Mechanical, 2012 Edition, with Georgia Amendments, (2014) (2015)
International Fuel Gas Code, 2012 Edition, with Georgia Amendments, (2014) (2015)
International Swimming Pool & Spa Code, 2012 Edition, with Georgia Amendments, (2014)
Life Safety Code (NFPA 101) or Georgia Accessibility Code Please contact the State Fire Marshal's Office

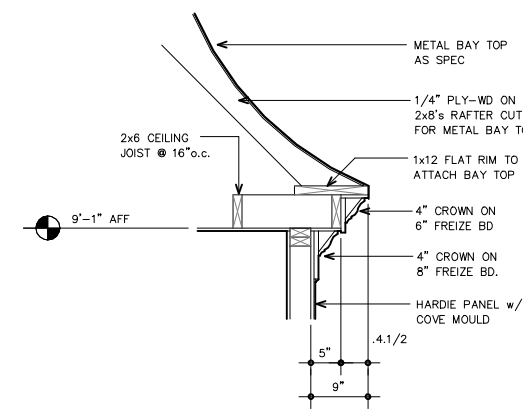
SQUARE FOOTAGE	
FIRST FLOOR	4129 SQ.FT.
SECOND FLOOR	3227 SQ.FT.
TOTAL	7356 SQ.FT.

BASEMENT	4129 SQ.FT.
TWO CAR GARAGE	650 SQ.FT.
ONE CAR GARAGE	639 SQ.FT.
FRONT PORCH	87 SQ.FT.
COVERED PORCH	389 SQ.FT.
COVERED TERRACE	389 SQ.FT.
REAR COVERED ENTY	50 SQ.FT.

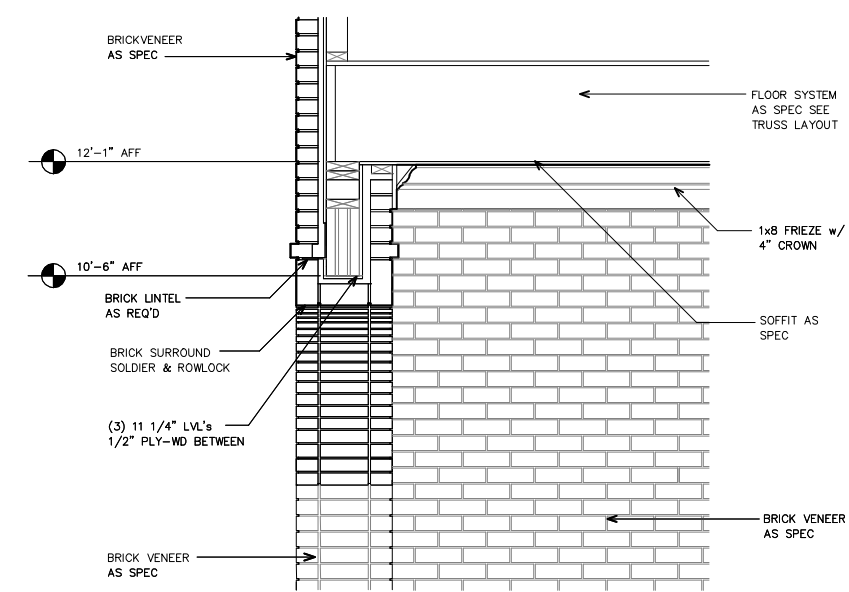
[illegible]



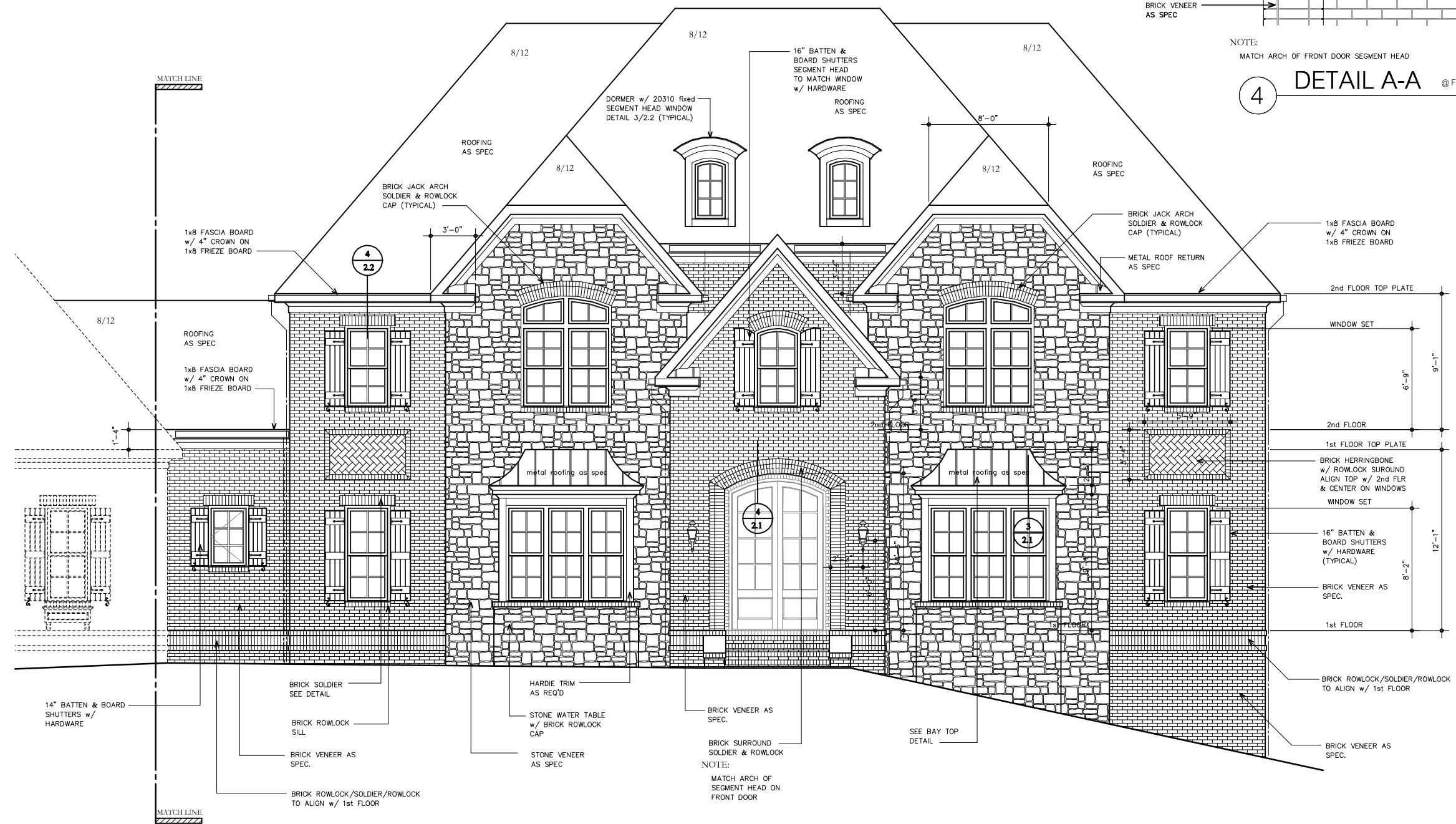
2 DETAIL WINDOW BRICK SOLDIER
SCALE: 3/4" = 1'-0" (22x34)
3/8" = 1'-0" (11x17)



3 DETAIL @ BAY TOP
SCALE: 3/4" = 1'-0" (22x34)
3/8" = 1'-0" (11x17)



4 DETAIL A-A @ FRONT ENTRY ARCH OPENING
SCALE: 3/4" = 1'-0" (22x34)
3/8" = 1'-0" (11x17)



1 PARTIAL FRONT ELEVATION
SCALE: 1/4" = 1'-0" (22x34)
1/8" = 1'-0" (11x17)

emlby
DESIGN GROUP LLC
214 First Avenue West Albany Or. 97321
(404) 402-6595 mpembry@att.net

This drawing is the property of
Embry Design Group LLC
and may not be copied or
reproduced without the written
permission of
Embry Design Group LLC

LOUDERMILK
H O M E S

1827 Powers Ferry Road
Building 6 Suite 100
Atlanta, Ga 30339
Phone: 770 485 2600

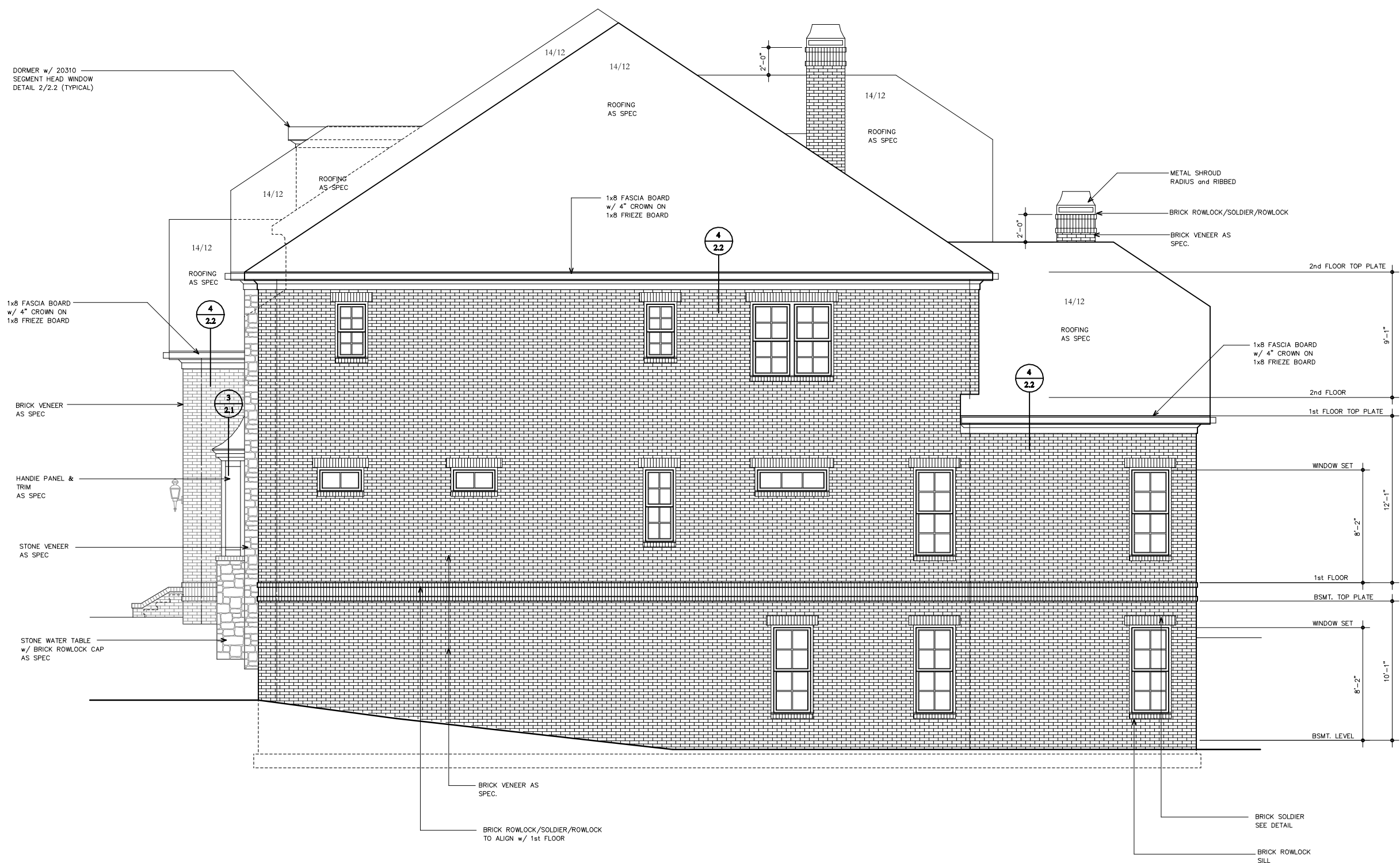
LOT 314
15970 MANOR CLUB DRIVE
Alpharetta, Ga 30004

PARTIAL FRONT
ELEVATION

REVISION LOG	DATE	BY	DESCRIPTION
REVISION 1.1.1	10/15/18	MPE	
REVISION 1.1.2	10/15/18	MPE	

DRAWING SET DATE: 10/15/2018

2.1



1 RIGHT SIDE ELEVATION

SCALE: 1/4" = 1'-0" (22x34)
1/8" = 1'-0" (11x17)

This drawing is the property of Embry Design Group LLC and may not be copied or reproduced without the written permission of Embry Design Group LLC



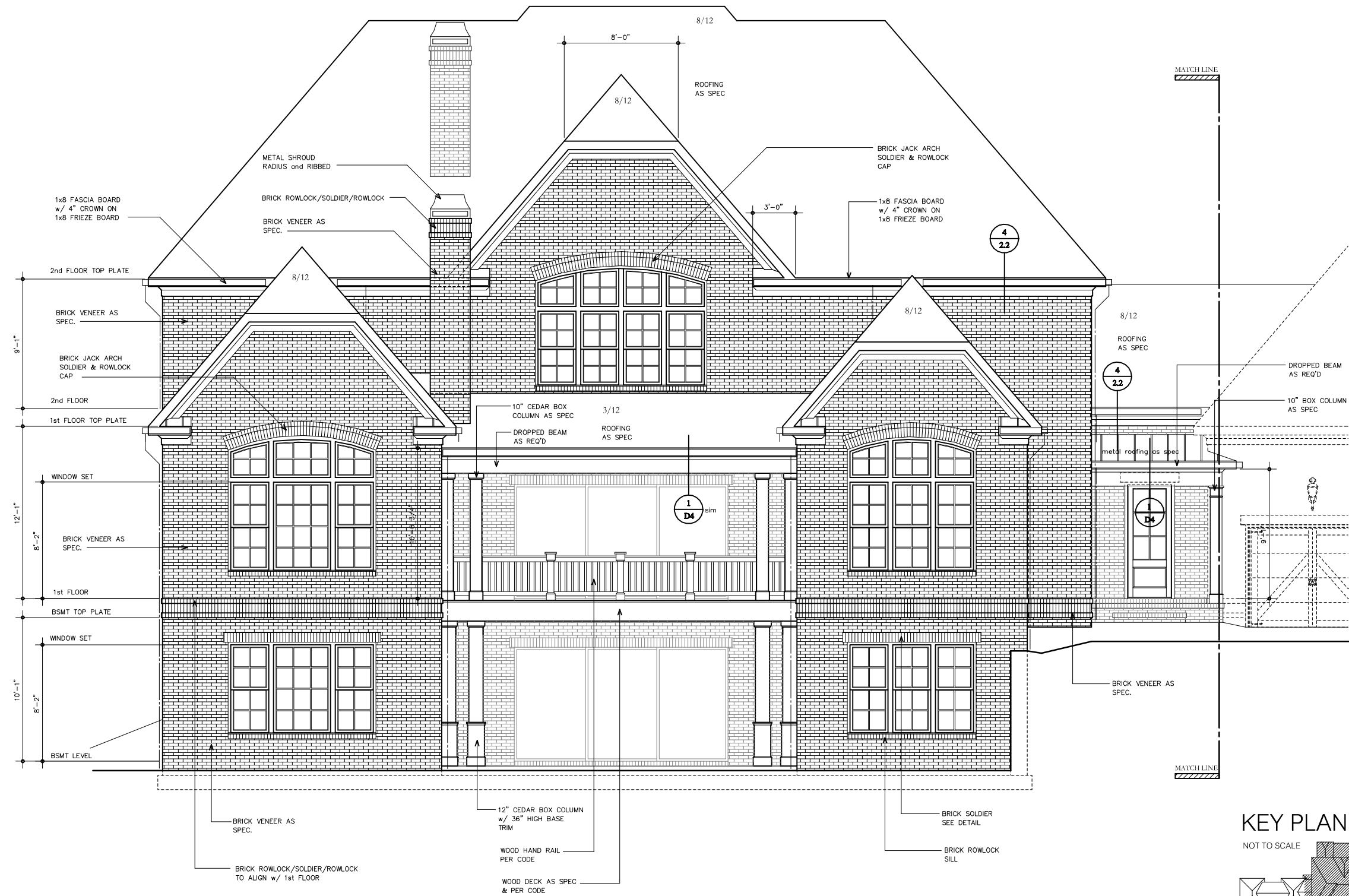
1827 Powers Ferry Road
Building 6 Suite 100
Atlanta, Ga 30339
Phone: 770 485 2600

LOT 314
15970 MANOR CLUB DRIVE
Alpharetta, Ga 30004

RIGHT SIDE
ELEVATION

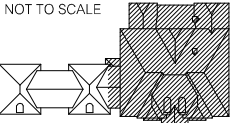
REVISION LOG	DATE	BY	DESCRIPTION

DRAWING SET DATE: 10/4/2018



KEY PLAN

NOT TO SCALE



1 PARTIAL REAR ELEVATION

SCALE: 1/4" = 1'-0" (22x34)
1/8" = 1'-0" (11x17)

This drawing is the property of
Embry Design Group LLC
and may not be copied or
reproduced without the written
permission of
Embry Design Group LLC



1827 Powers Ferry Road
Building 6 Suite 100
Atlanta, Ga 30339
Phone: 770 485 2600

LOT 314
15970 MANOR CLUB DRIVE
Alpharetta, Ga 30004

PARTIAL REAR
ELEVATION

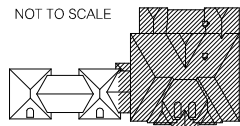
REVISION LOG	DATE	BY
DESCRIPTION		

DRAWING SET DATE: 10/4/2018

PROVIDE A ELECTRICAL CONDUIT
UNDER SLAB TO ISLAND

KEY PLAN

NOT TO SCALE



PARTIAL SLAB PLAN

SCALE: 1/4" = 1'-0" (22x34)
1/8" = 1'-0" (11x17)



1827 Powers Ferry Road
Building 6 Suite 100
Atlanta, Ga 30339
Phone: 770 485 2600

LOT 314
15970 MANOR CLUB DRIVE
Alpharetta, Ga 30004

PARTIAL
SLAB PLAN

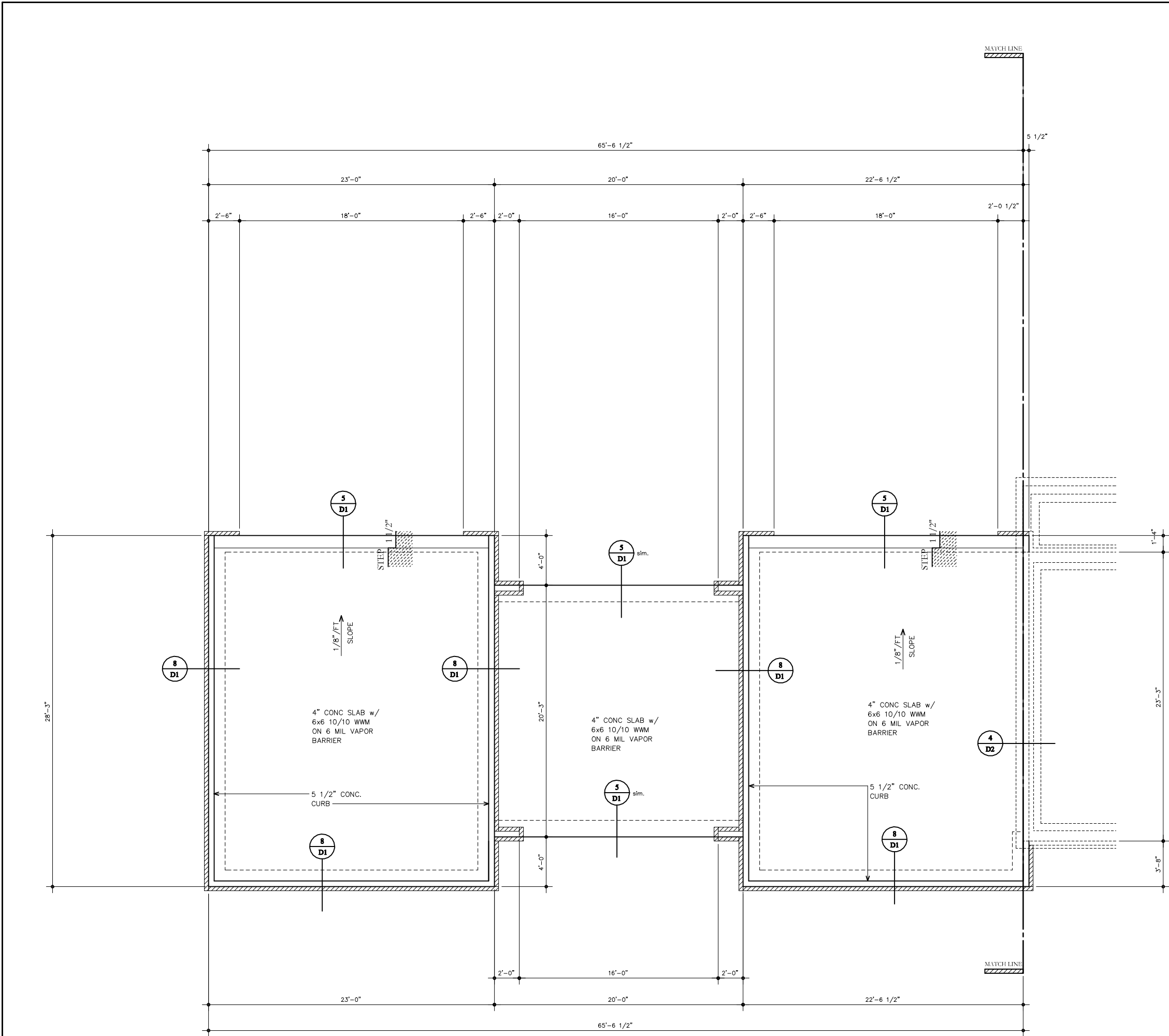
REVISION LOG	DATE	BY
DESCRIPTION		
DRAWING SET DATE:	10/4/2018	

3.1

This drawing is the property of
Embry Design Group LLC
and may not be copied or
reproduced without the written
permission of
Embry Design Group LLC

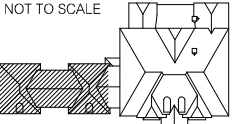
embry
DESIGN GROUP LLC
214 First Avenue West Albany Or. 97321
(404) 402-6595 npembry@att.net

RELEASED FOR CONSTRUCTION



KEY PLAN

NOT TO SCALE



1 PARTIAL SLAB PLAN

SCALE: 1/4" = 1'-0" (22x34)
1/8" = 1'-0" (11x17)

embry
DESIGN GROUP LLC.
214 First Avenue West Albany Or. 97321
(404) 402-6595 mpembry@att.net

This drawing is the property of Embry Design Group LLC and may not be copied or reproduced without the written permission of Embry Design Group LLC

LOUDERMILK
H O M E S

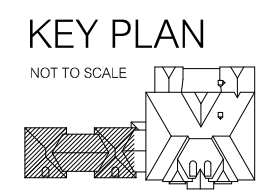
1827 Powers Ferry Road
Building 6 Suite 100
Atlanta, Ga 30339
Phone: 770 485 2600

LOT 314
15970 MANOR CLUB DRIVE
Alpharetta, Ga 30004

REVISION LOG	DATE	BY
DESCRIPTION		

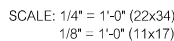
DRAWING SET DATE: 10/4/2018

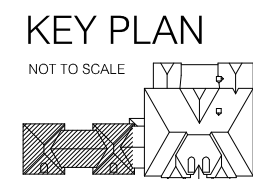
3.2



1

RELEASED FOR CONSTRUCTION

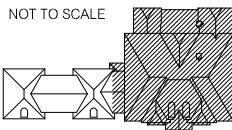




SCALE: 1/4" = 1'-0" (22x34)
1/8" = 1'-0" (11x17)

KEY PLAN

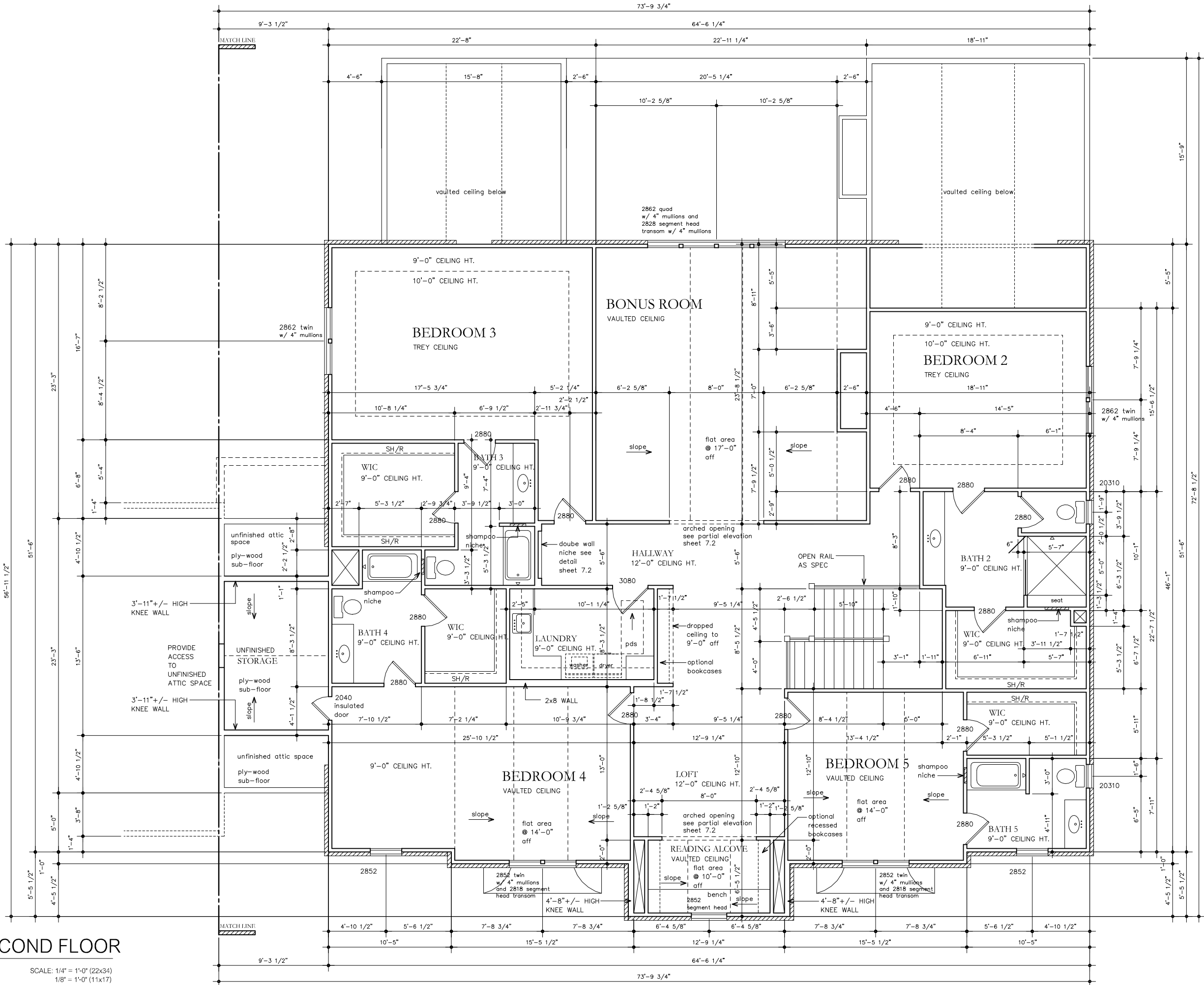
NOT TO SCALE



1

PARTIAL SECOND FLOOR

SCALE: 1/4" = 1'-0" (22x34)
1/8" = 1'-0" (11x17)



This drawing is the property of
Embry Design Group LLC
and may not be copied or
reproduced without the written
permission of
Embry Design Group LLC



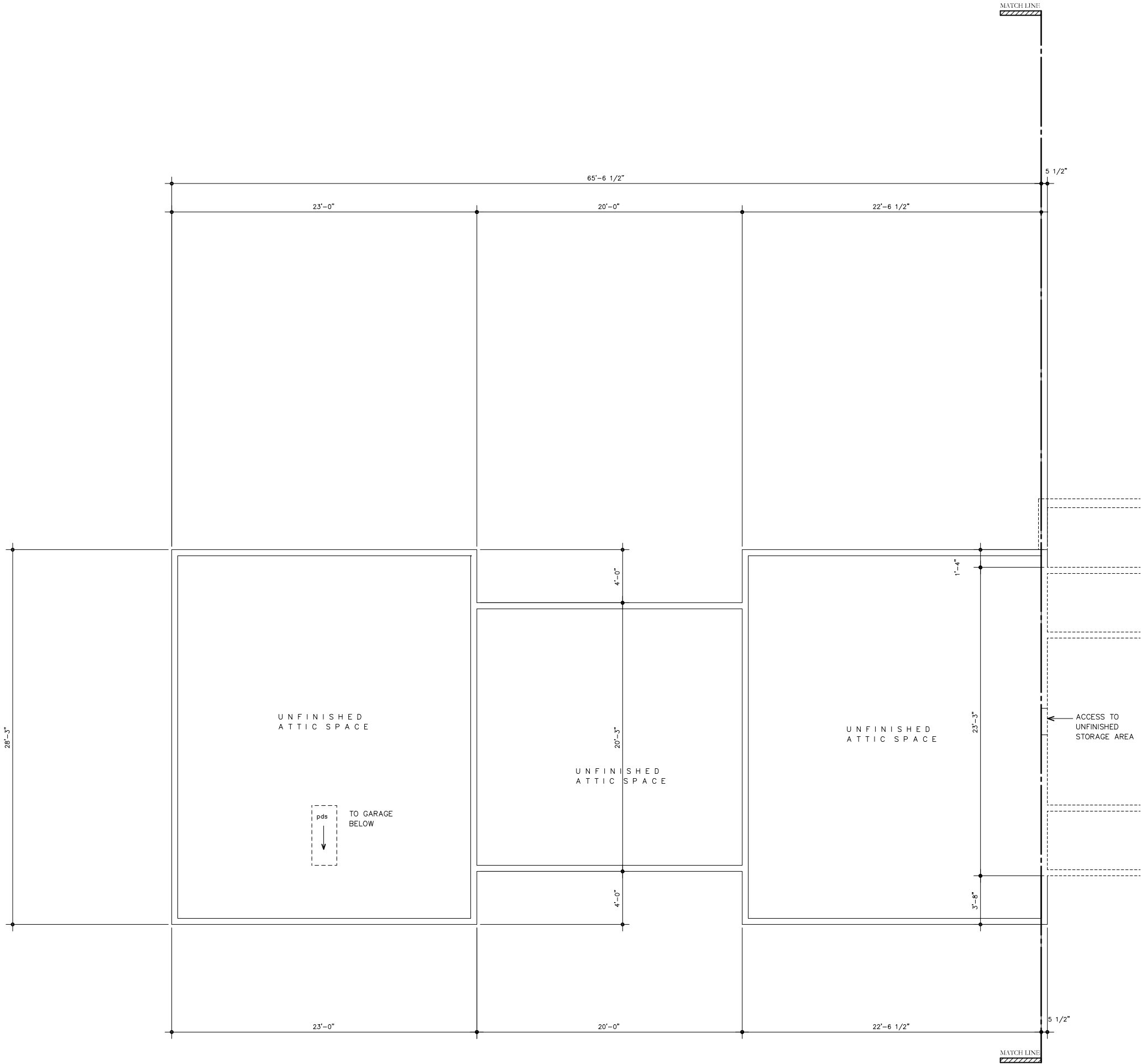
1827 Powers Ferry Road
Building 6 Suite 100
Atlanta, Ga 30339
Phone: 770 485 2600

LOT 314
15970 MANOR CLUB DRIVE
Alpharetta, Ga 30004

PARTIAL
SECOND FLOOR

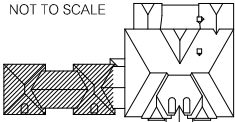
REVISION LOG	DATE	BY
DESCRIPTION		
DRAWING SET DATE:	10/4/2018	

4.3



KEY PLAN

NOT TO SCALE



1 PARTIAL SECOND FLOOR

SCALE: 1/4" = 1'-0" (22x34)
1/8" = 1'-0" (11x17)

This drawing is the property of Embry Design Group LLC and may not be copied or reproduced without the written permission of Embry Design Group LLC



1827 Powers Ferry Road
Building 6 Suite 100
Atlanta, Ga 30339
Phone: 770 485 2600

LOT 314
15970 MANOR CLUB DRIVE
Alpharetta, Ga 30004

PARTIAL
SECOND FLOOR

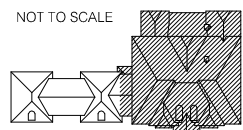
REVISION LOG	DESCRIPTION	BY	DATE

DRAWING SET DATE: 10/4/2018

4.4

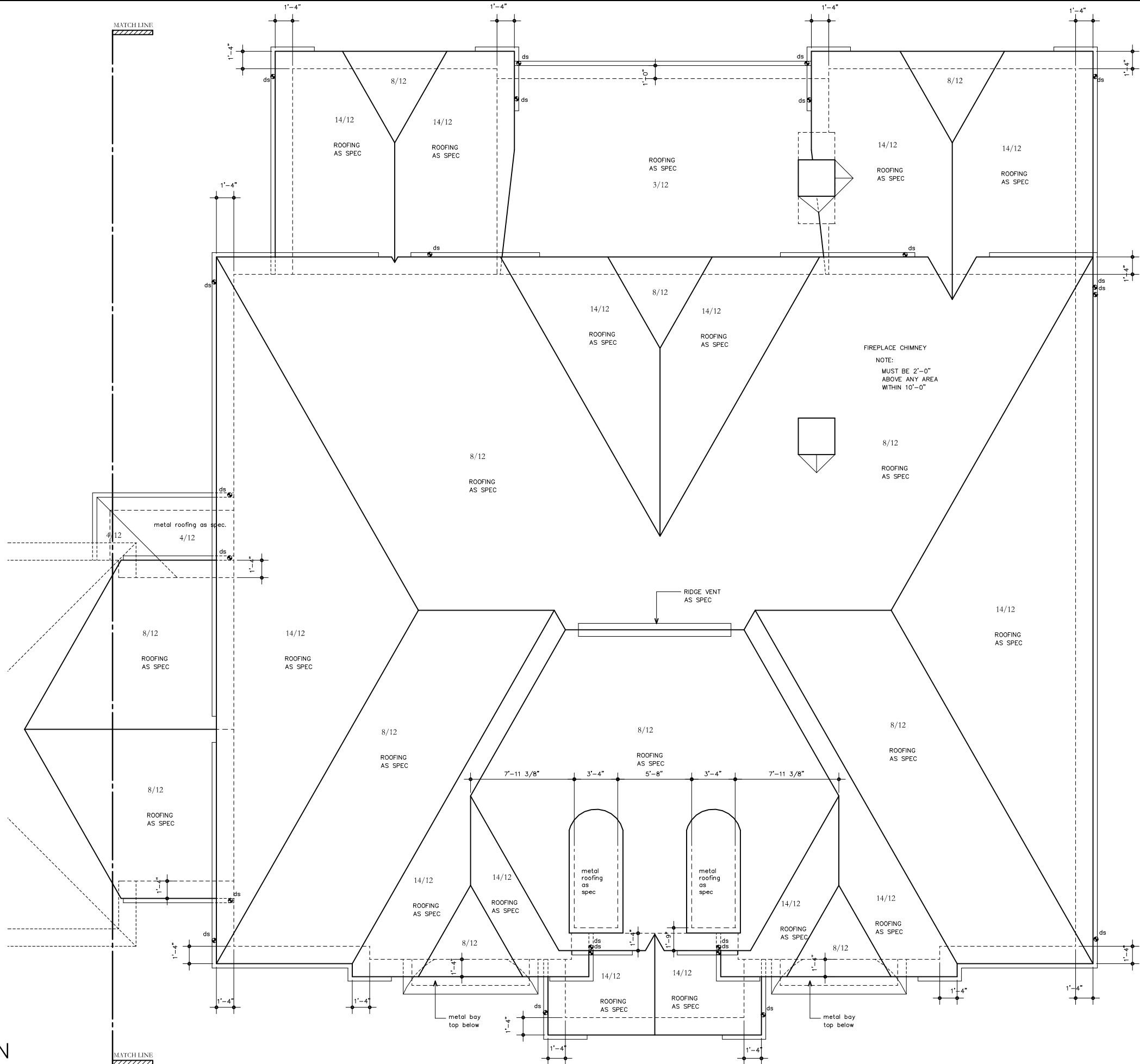
KEY PLAN

NOT TO SCALE



PARTIAL ROOF PLAN

SCALE: 1/4" = 1'-0" (22x34)
1/8" = 1'-0" (11x17)



This drawing is the property of
Embry Design Group LLC
and may not be copied or
reproduced without the written
permission of
Embry Design Group LLC

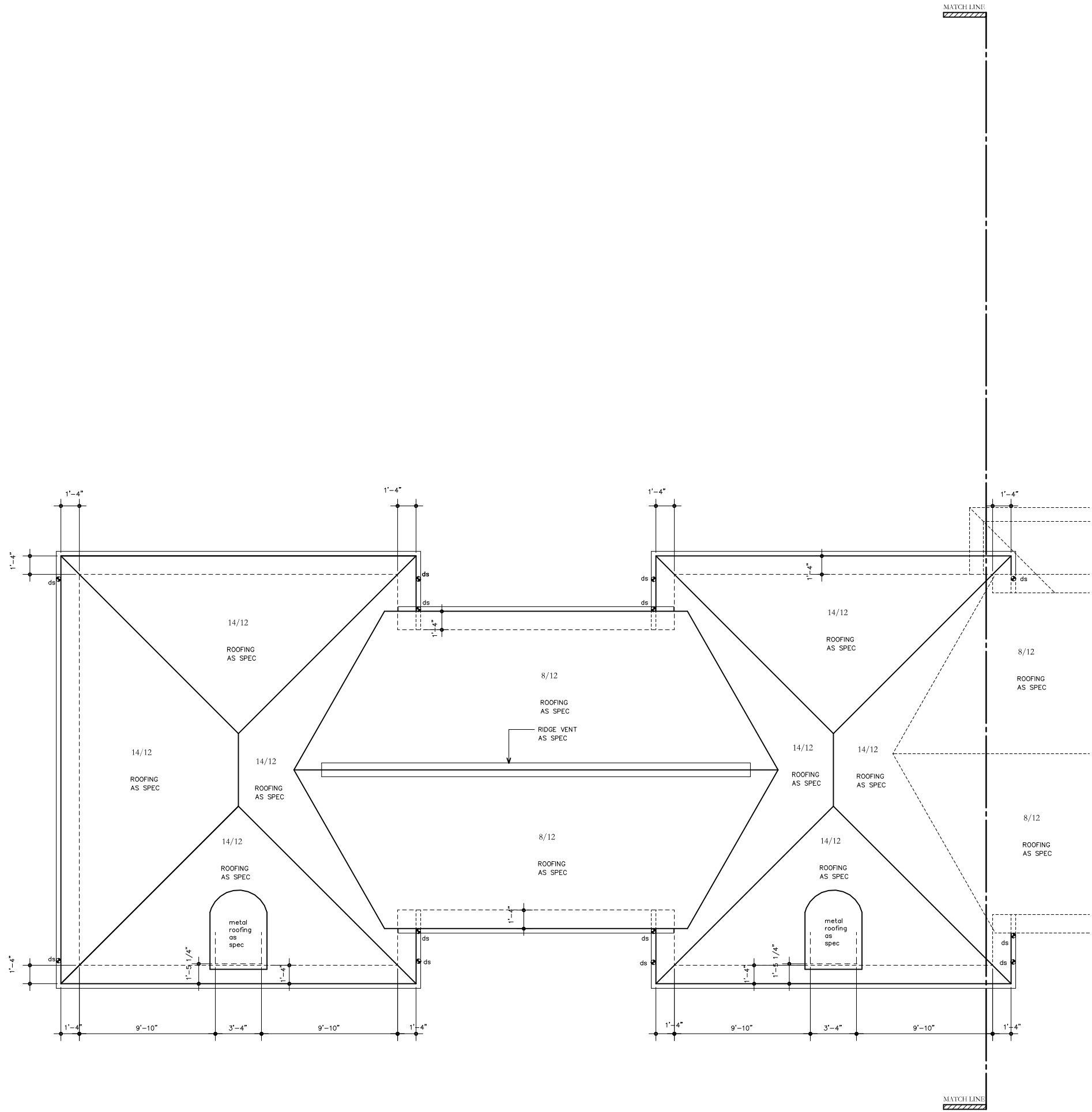


1827 Powers Ferry Road
Building 6 Suite 100
Atlanta, Ga 30339
Phone: 770 485 2600

PARTIAL
ROOF PLAN

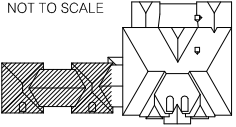
REVISION LOG	DATE	BY
DESCRIPTION		

DRAWING SET DATE: 10/4/2018



KEY PLAN

NOT TO SCALE



1 PARTIAL ROOF PLAN

SCALE: 1/4" = 1'-0" (22x34)
1/8" = 1'-0" (11x17)

This drawing is the property of Embury Design Group LLC and may not be copied or reproduced without the written permission of Embury Design Group LLC



1827 Powers Ferry Road
Building 6 Suite 100
Atlanta, Ga 30339
Phone: 770 485 2600

PARTIAL
ROOF PLAN

REVISION LOG		DATE
DESCRIPTION	BY	

DRAWING SET DATE: 10/4/2018

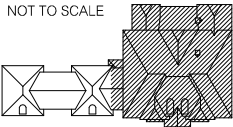
MECH./ELEC. LEGEND

SYMBOL	DESCRIPTION
	DUPLEX OUTLET
	HALF SWITCHED DUPLEX OUTLET
	DUPLEX OUTLET AT 48" A.F.F.
	GROUND FAULT DUPLEX OUTLET
	G.F.I DUPLEX OUTLET AT 48" A.F.F.
	WATER PROOF DUPLEX OUTLET
	220 VOLT OUTLET
	CEILING FIXTURE
	WALL HUNG FIXTURE
	RECESSED CAN FIXTURE
	RECESSED EYEBALL FIXTURE
	VENT FAN
	CEILING MOUNT SMOKE DETECTOR
	CEILING MOUNT SMOKE/CARBON DETECTOR
	WALL MOUNT SMOKE DETECTOR
	DOORBELL CHIMES
	GAS STUB
	ICEMAKER TAP
	HOSE BIBB
	LOW VOLTAGE SWITCH 12V
	CABLE T.V. OUTLET
	TELEPHONE JACK
	FLOOD LIGHTS
	VIDEO CAMERA
	CEILING FAN
	FLUORESCENT FIXTURE
	SINGLE POLE SWITCH 48" A.F.F.
	THREE POLE SWITCH 48" A.F.F.
	FOUR POLE SWITCH 48" A.F.F.
	THERMOSTAT
	FLOOR BREAK
	ABOVE FINISHED FLOOR
	TRACK LIGHTING

NOTE:
ARC FAULT ALL LIVING AND BEDROOM AREAS.

KEY PLAN

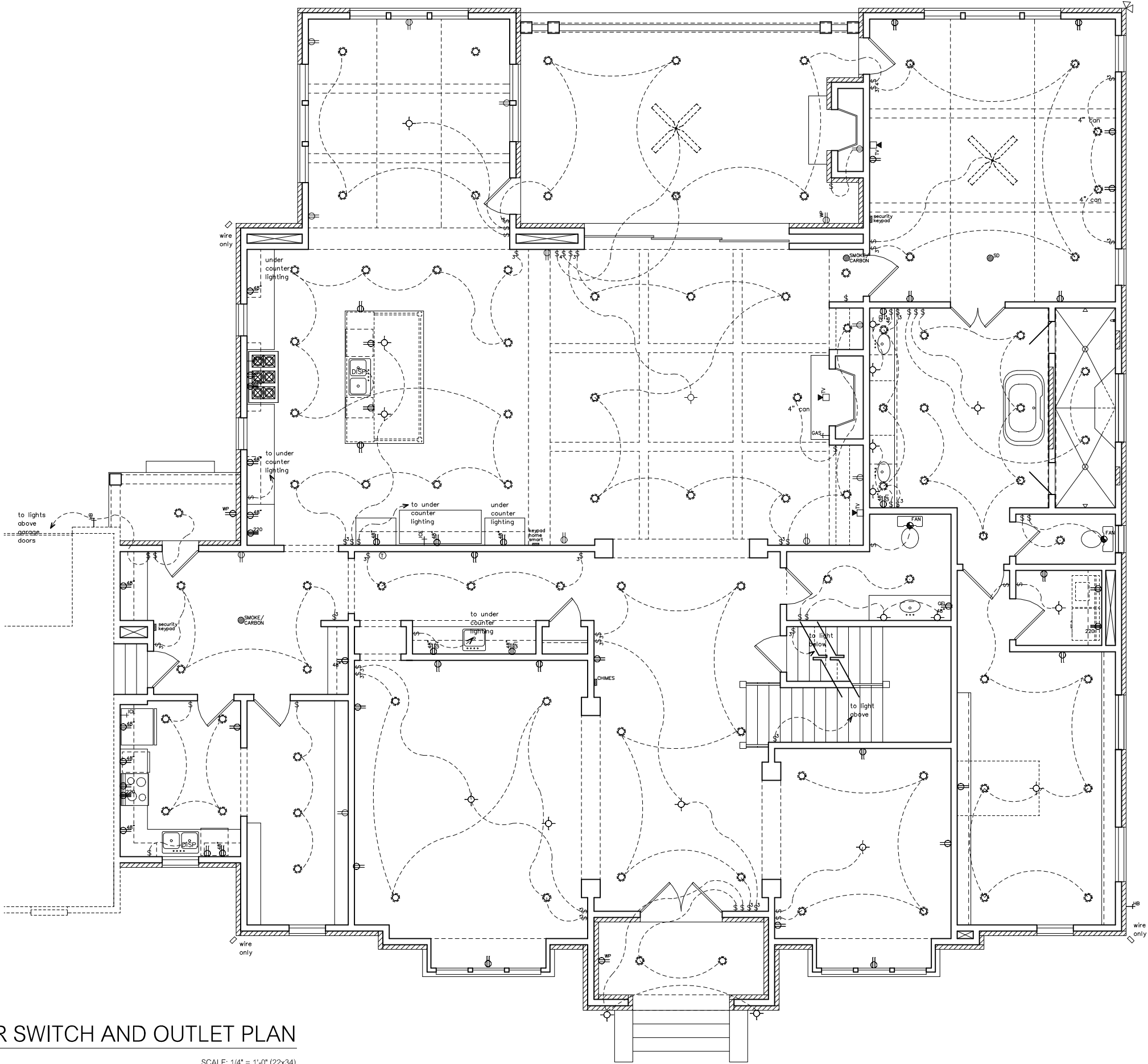
NOT TO SCALE



1

PARTIAL 1ST FLOOR SWITCH AND OUTLET PLAN

SCALE: 1/4" = 1'-0" (22x34)
1/8" = 1'-0" (11x17)



em bry
DESIGN GROUP LLC
214 First Avenue West Albany Or. 97321
(404) 402-6595 mpembry@att.net

This drawing is the property of
Embry Design Group LLC
and may not be copied or
reproduced without the written
permission of
Embry Design Group LLC



1827 Powers Ferry Road
Building 6 Suite 100
Atlanta, Ga 30339
Phone: 770 485 2600

LOT 314
15970 MANOR CLUB DRIVE
Alpharetta, Ga 30004

ELECTRICAL
LAYOUT PLAN

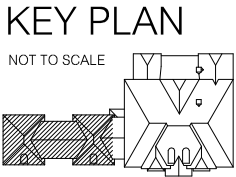
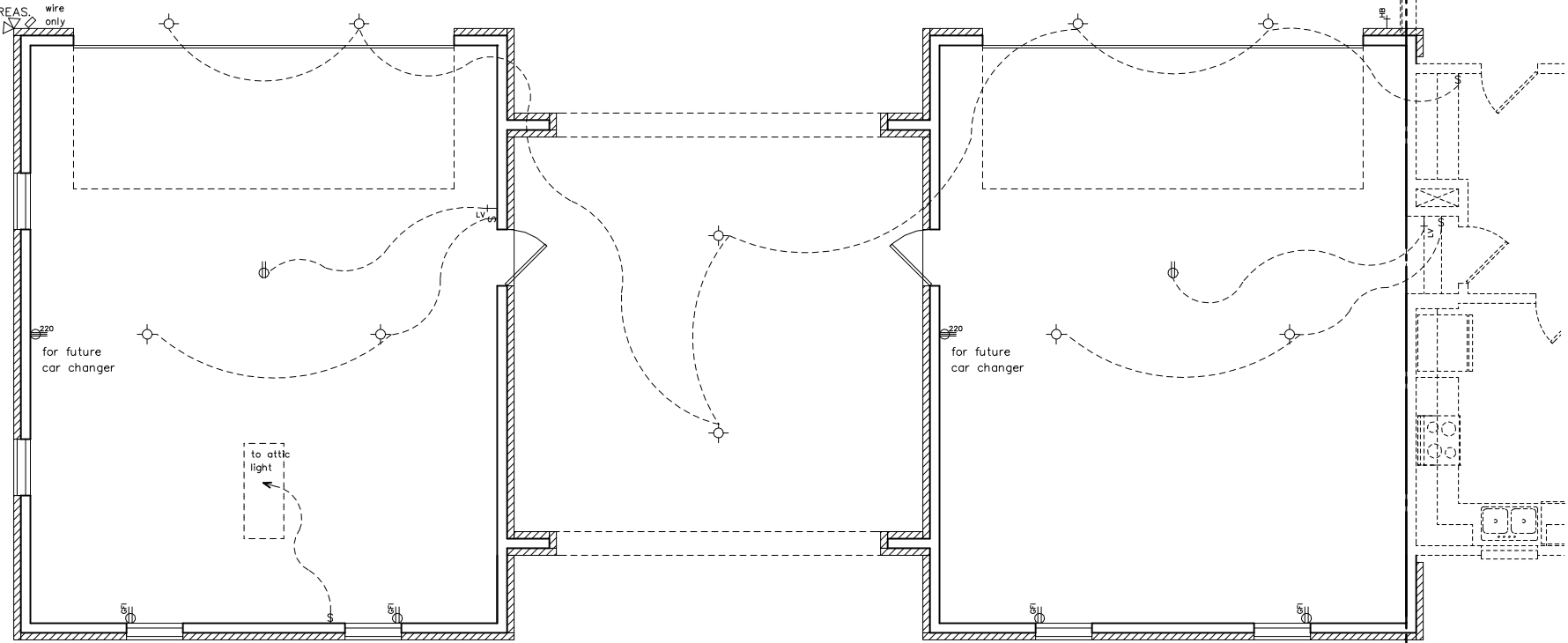
REVISION LOG	DATE	BY
DESCRIPTION		

DRAWING SET DATE: 10/4/2018

6.1

MECH./ELEC. LEGEND	
SYMBOL	DESCRIPTION
	DUPLEX OUTLET
	HALF SWITCHED DUPLEX OUTLET
	DUPLEX OUTLET AT 48" A.F.F.
	GROUND FAULT DUPLEX OUTLET
	G.F.I DUPLEX OUTLET AT 48" A.F.F.
	WATER PROOF DUPLEX OUTLET
	220 VOLT OUTLET
	CEILING FIXTURE
	WALL HUNG FIXTURE
	RECESSED CAN FIXTURE
	RECESSED EYEBALL FIXTURE
	VENT FAN
	CEILING MOUNT SMOKE DETECTOR
	CEILING MOUNT SMOKE/CARBON DETECTOR
	WALL MOUNT SMOKE DETECTOR
	DOORBELL CHIMES
	GAS STUB
	ICEMAKER TAP
	HOSE BIBB
	LOW VOLTAGE SWITCH 12V
	CABLE T.V. OUTLET
	TELEPHONE JACK
	FLOOD LIGHTS
	VIDEO CAMERA
	CEILING FAN
	FLUORESCENT FIXTURE
	SINGLE POLE SWITCH 48" A.F.F.
	THREE POLE SWITCH 48" A.F.F.
	FOUR POLE SWITCH 48" A.F.F.
	THERMOSTAT
	FLOOR BREAK
	ABOVE FINISHED FLOOR
	TRACK LIGHTING

NOTE:
ARC FAULT ALL LIVING AND BEDROOM AREAS.



1 PARTIAL 1ST FLOOR SWITCH AND OUTLET PLAN
SCALE: 1/4" = 1'-0" (22x34)
1/8" = 1'-0" (11x17)

embry
DESIGN GROUP LLC.
214 First Avenue West Albany Or. 97321
(404) 402-6595 mpembry@att.net

This drawing is the property of Embry Design Group LLC and may not be copied or reproduced without the written permission of Embry Design Group LLC

LOUDERMILK
H O M E S

1827 Powers Ferry Road
Building 6 Suite 100
Atlanta, Ga 30339
Phone: 770 485 2600

LOT 314
15970 MANOR CLUB DRIVE
Alpharetta, Ga 30004

ELEC. PLANS

DATE	
BY	
REVISION LOG	
DESCRIPTION	
DRAWING SET DATE:	10/4/2018

6.2

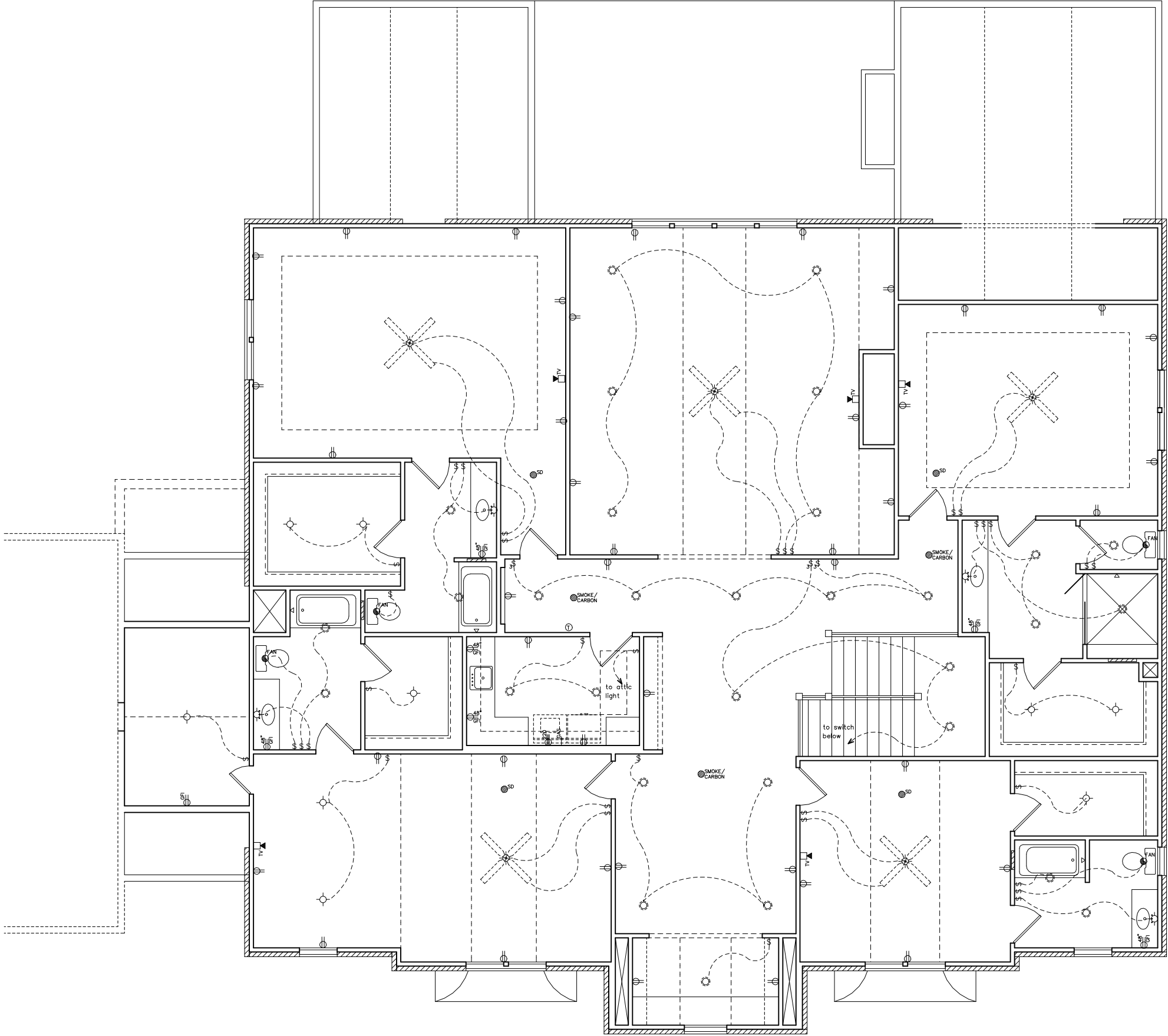
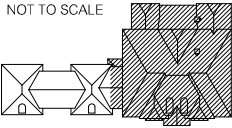
MECH./ELEC. LEGEND

SYMBOL	DESCRIPTION
	DUPLEX OUTLET
	HALF SWITCHED DUPLEX OUTLET
	DUPLEX OUTLET AT 48" A.F.F.
	GROUND FAULT DUPLEX OUTLET
	G.F.I DUPLEX OUTLET AT 48" A.F.F.
	WATER PROOF DUPLEX OUTLET
	220 VOLT OUTLET
	CEILING FIXTURE
	WALL HUNG FIXTURE
	RECESSED CAN FIXTURE
	RECESSED EYEBALL FIXTURE
	VENT FAN
	CEILING MOUNT SMOKE DETECTOR
	CEILING MOUNT SMOKE/CARBON DETECTOR
	WALL MOUNT SMOKE DETECTOR
	DOORBELL CHIMES
	GAS STUB
	ICEMAKER TAP
	HOSE BIBB
	LOW VOLTAGE SWITCH 12V
	CABLE T.V. OUTLET
	TELEPHONE JACK
	FLOOD LIGHTS
	VIDEO CAMERA
	CEILING FAN
	FLUORESCENT FIXTURE
	SINGLE POLE SWITCH 48" A.F.F.
	THREE POLE SWITCH 48" A.F.F.
	FOUR POLE SWITCH 48" A.F.F.
	THERMOSTAT
	FLOOR BREAK
	ABOVE FINISHED FLOOR
	TRACK LIGHTING

NOTE:
ARC FAULT ALL LIVING AND BEDROOM AREAS.

KEY PLAN

NOT TO SCALE



1 PARTIAL 2ND FLOOR SWITCH AND OUTLET PLAN

SCALE: 1/4" = 1'-0" (22x34)
1/8" = 1'-0" (11x17)

emlbry
DESIGN GROUP LLC
214 First Avenue West Albany Or. 97321
(404) 402-6595 mpembry@att.net

This drawing is the property of
Embry Design Group LLC
and may not be copied or
reproduced without the written
permission of
Embry Design Group LLC



1827 Powers Ferry Road
Building 6 Suite 100
Atlanta, Ga 30339
Phone: 770 485 2600

LOT 314
15970 MANOR CLUB DRIVE
Alpharetta, Ga 30004

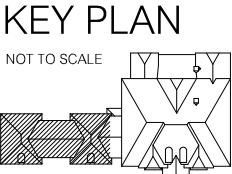
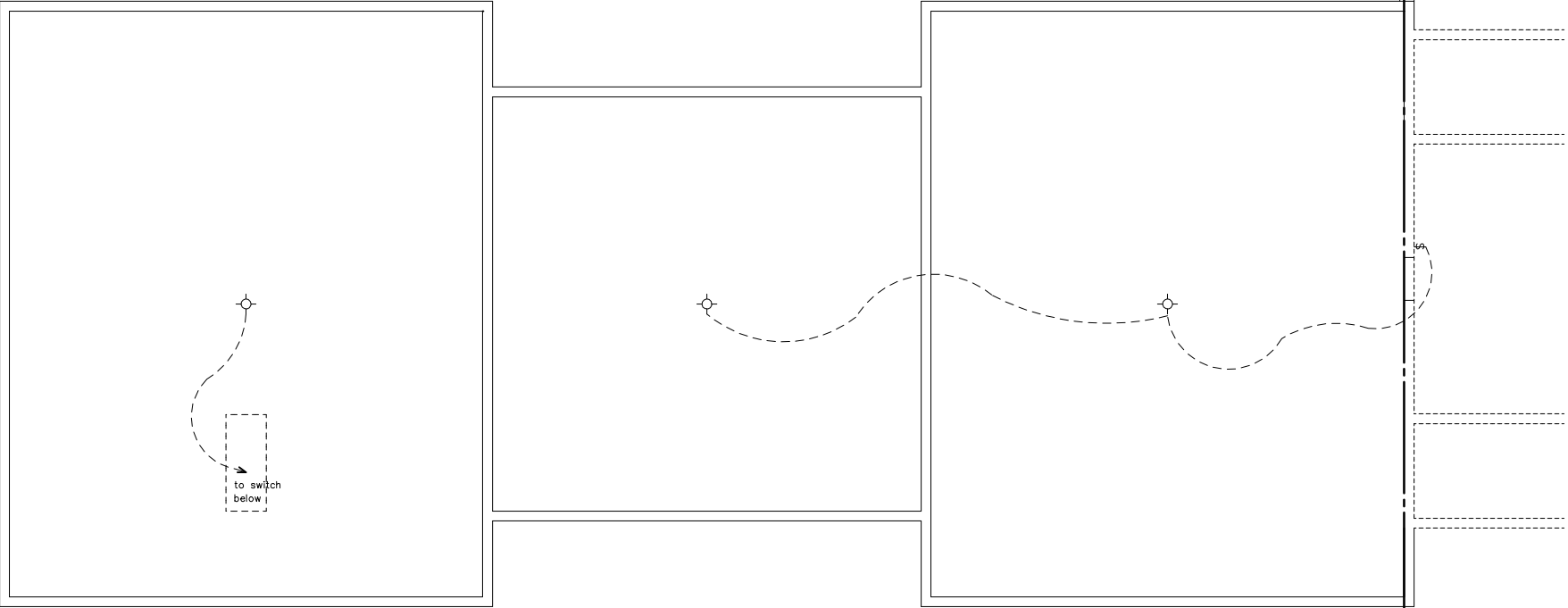
ELECTRICAL
LAYOUT PLAN

REVISION LOG	DATE
BY	
DESCRIPTION	

DRAWING SET DATE: 10/4/2018

MECH./ELEC. LEGEND	
SYMBOL	DESCRIPTION
	DUPLEX OUTLET
	HALF SWITCHED DUPLEX OUTLET
	DUPLEX OUTLET AT 48" A.F.F.
	GROUND FAULT DUPLEX OUTLET
	G.F.I DUPLEX OUTLET AT 48" A.F.F.
	WATER PROOF DUPLEX OUTLET
	220 VOLT OUTLET
	CEILING FIXTURE
	WALL HUNG FIXTURE
	RECESSED CAN FIXTURE
	RECESSED EYEBALL FIXTURE
	VENT FAN
	CEILING MOUNT SMOKE DETECTOR
	CEILING MOUNT SMOKE/CARBON DETECTOR
	WALL MOUNT SMOKE DETECTOR
	DOORBELL CHIMES
	GAS STUB
	ICEMAKER TAP
	HOSE BIBB
	LOW VOLTAGE SWITCH 12V
	CABLE T.V. OUTLET
	TELEPHONE JACK
	FLOOD LIGHTS
	VIDEO CAMERA
	CEILING FAN
	FLUORESCENT FIXTURE
	SINGLE POLE SWITCH 48" A.F.F.
	THREE POLE SWITCH 48" A.F.F.
	FOUR POLE SWITCH 48" A.F.F.
	THERMOSTAT
	FLOOR BREAK
	ABOVE FINISHED FLOOR
	TRACK LIGHTING

NOTE:
ARC FAULT ALL LIVING AND BEDROOM AREAS.



1

PARTIAL 2ND FLOOR SWITCH AND OUTLET PLAN

SCALE: 1/4" = 1'-0" (22x34)
1/8" = 1'-0" (11x17)

Embry
DESIGN GROUP LLC.
214 First Avenue West Albany Or. 97321
(404) 402-6595 mpembry@att.net

This drawing is the property of Embry Design Group LLC and may not be copied or reproduced without the written permission of Embry Design Group LLC

LOUDERMILK
H O M E S

1827 Powers Ferry Road
Building 6 Suite 100
Atlanta, Ga 30339
Phone: 770 485 2600

LOT 314
15970 MANOR CLUB DRIVE
Alpharetta, Ga 30004

REVISION LOG	DATE	BY
DESCRIPTION		

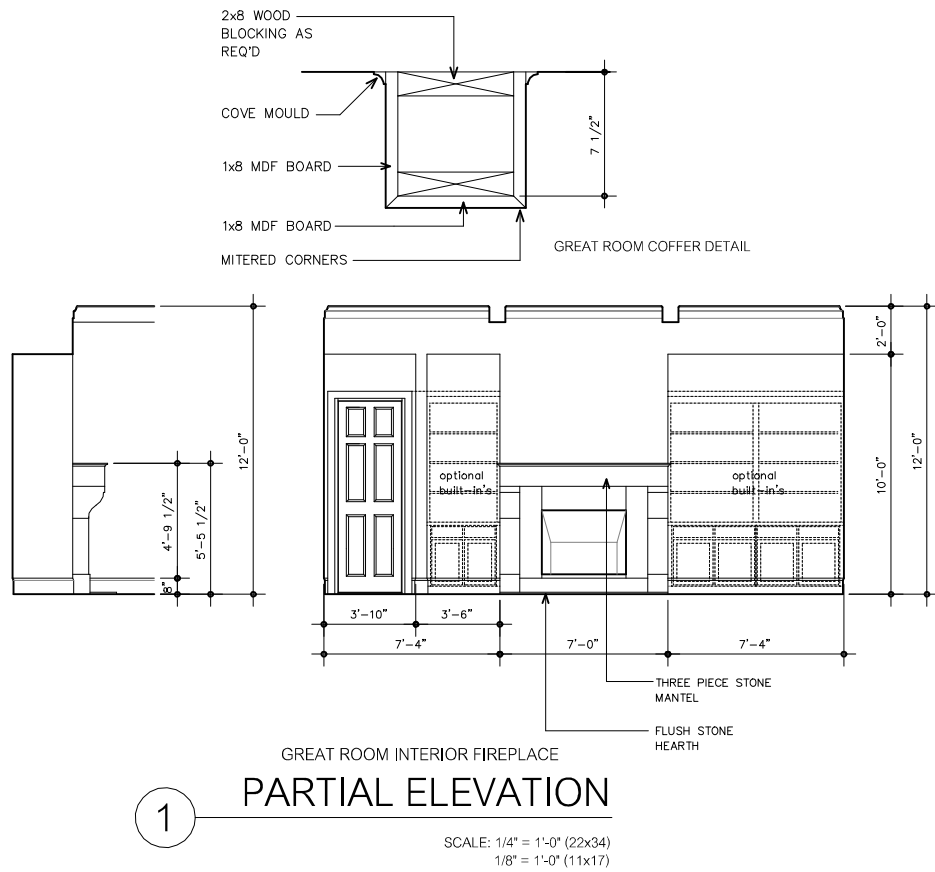
DRAWING SET DATE:	10/4/2018
-------------------	-----------

6.4

C:\Users\Maury Embry\Desktop\Builder\Loudermilk Homes\Lot 314

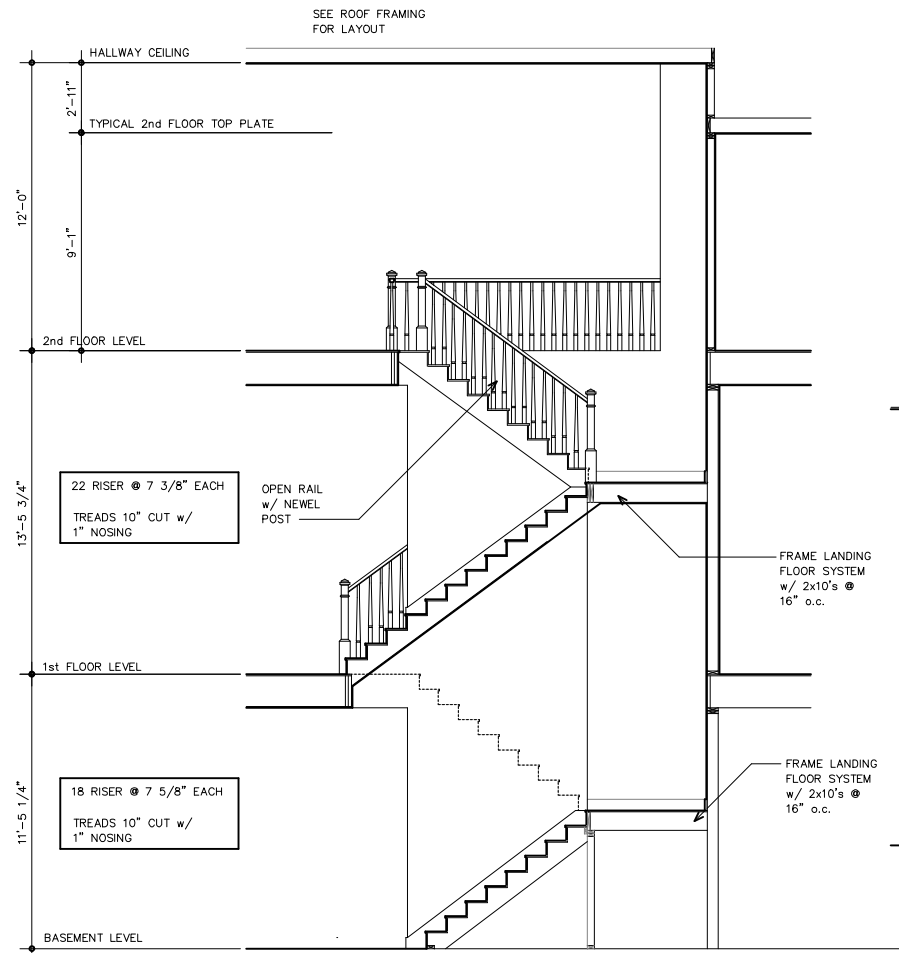
10/4/2018

RELEASED FOR CONSTRUCTION



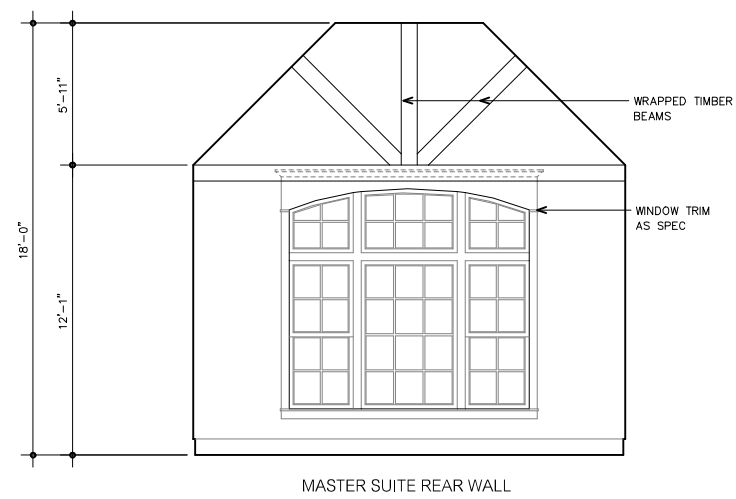
GREAT ROOM INTERIOR FIREPLACE
PARTIAL ELEVATION

SCALE: 1/4" = 1'-0" (22x34)
1/8" = 1'-0" (11x17)

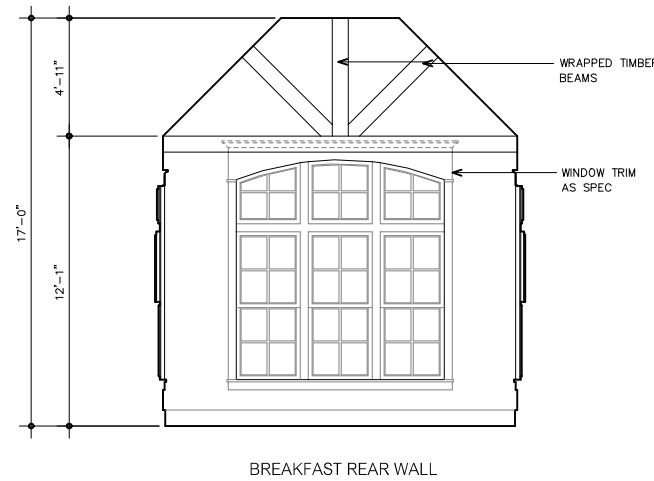


WALL SECTION
SECTION @ STAIRS

SCALE: 1/4" = 1'-0" (22x34)
1/8" = 1'-0" (11x17)



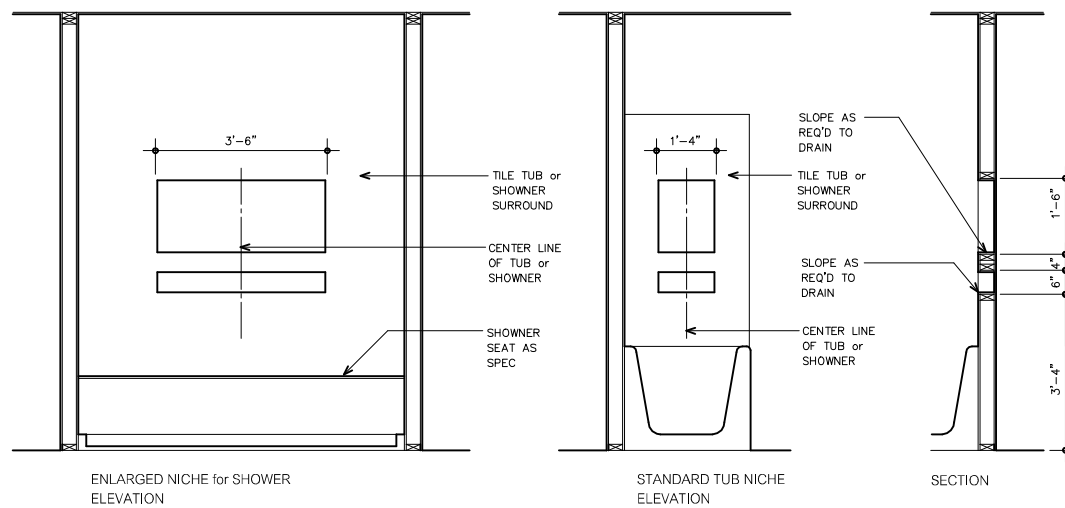
MASTER SUITE REAR WALL



BREAKFAST REAR WALL

PARTIAL ELEVATION

SCALE: 1/4" = 1'-0" (22x34)
1/8" = 1'-0" (11x17)



ENLARGED NICHE for SHOWER
ELEVATION

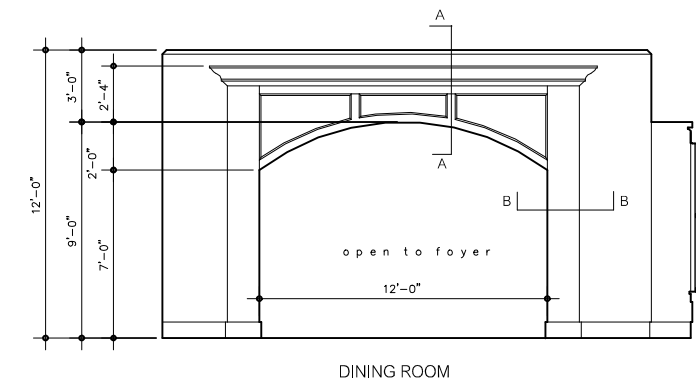
STANDARD TUB NICHE
ELEVATION

SECTION

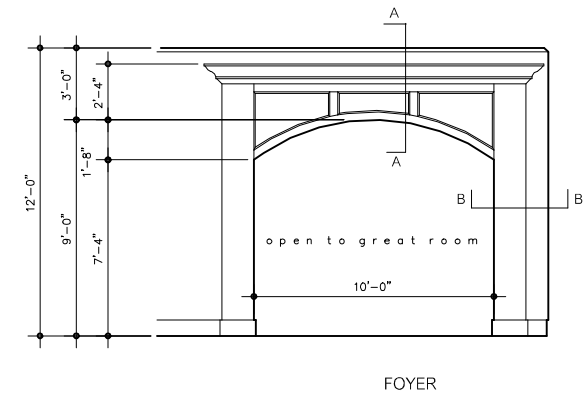
DETAIL

SHAMPOO NICHE

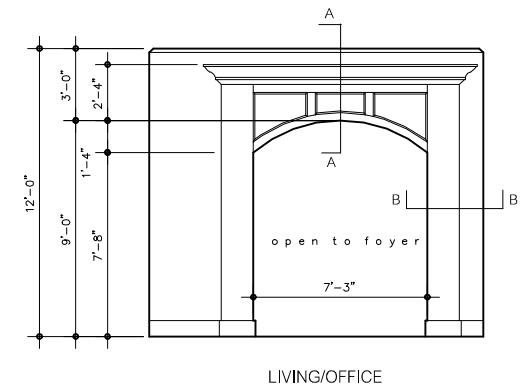
SCALE: 1/2" = 1'-0" (22x34)
1/4" = 1'-0" (11x17)



DINING ROOM



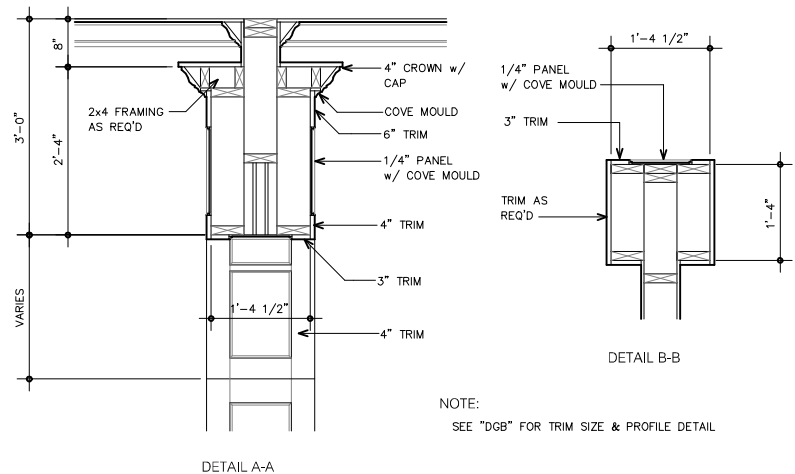
FOYER



LIVING/OFFICE

PARTIAL ELEVATION

SCALE: 1/4" = 1'-0" (22x34)
1/8" = 1'-0" (11x17)



DETAIL A-A

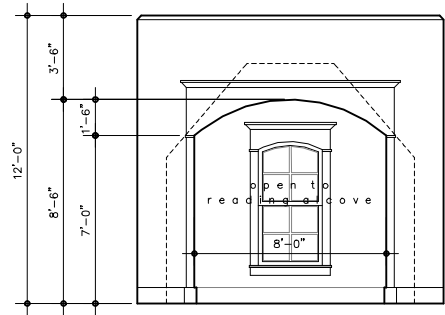
DETAIL B-B

NOTE:
SEE "DCB" FOR TRIM SIZE & PROFILE DETAIL

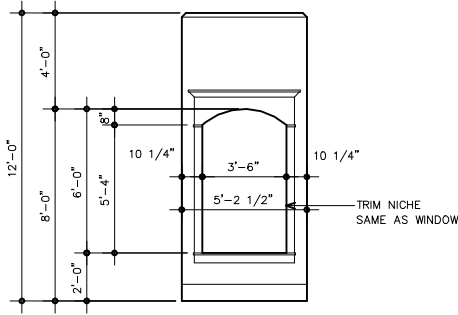
DETAIL

@ ARCHED OPENINGS

SCALE: 1/2" = 1'-0" (22x34)
1/4" = 1'-0" (11x17)



TRIM SAME
AS WINDOWS



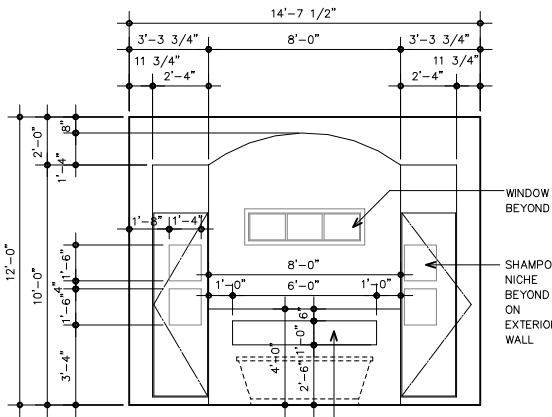
TRIM NICHE
SAME AS WINDOW

LOFT

HALLWAY

1 PARTIAL ELEVATIONS SECOND FLOOR

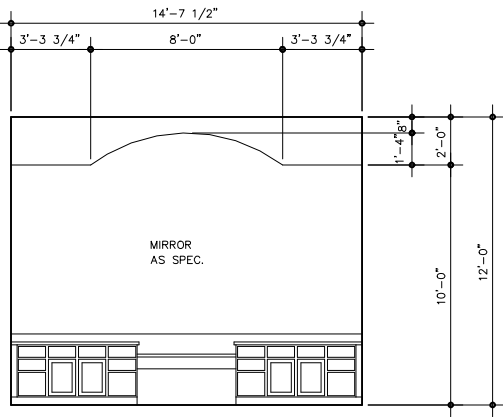
SCALE: 1/4" = 1'-0" (22x34)
1/8" = 1'-0" (11x17)



WINDOW
BEYOND

SHAMPOO
NICHE
BEYOND
ON
EXTERIOR
WALL

TUB WALL



NOTE:
SEE CABINET LAYOUT
FOR CABINETS
VANITY WALL

2 PARTIAL ELEVATION MASTER BATH

SCALE: 1/4" = 1'-0" (22x34)
1/8" = 1'-0" (11x17)



NOTE:
SEE CABINET LAYOUT
FOR CABINETS

3 PARTIAL ELEVATION BAR AREA

SCALE: 1/4" = 1'-0" (22x34)
1/8" = 1'-0" (11x17)

REVISION LOG	DATE	BY
DESCRIPTION		

DRAWING SET DATE: 10/4/2018