



**LOUDERMILK**  
CUSTOM HOMES

5271 Lake Forrest Drive  
Architecture and landscape renderings do not  
reflect finished selections

[www.loudermilkhomes.com](http://www.loudermilkhomes.com) | office: 770.485.2600 | email: [info@loudermilkhomes.com](mailto:info@loudermilkhomes.com)  
1827 Powers Ferry Road, Building 6, Atlanta, GA 30339





**LOUDERMILK**  
CUSTOM HOMES

5271 Lake Forrest Drive  
Architecture and landscape renderings do not reflect finished selections







**LOUDERMILK**  
CUSTOM HOMES

5271 Lake Forrest Drive  
Architecture and landscape renderings do not reflect finished selections







**LOUDERMILK**  
CUSTOM HOMES







**LOUDERMILK**  
CUSTOM HOMES

5271 Lake Forrest Drive  
Architecture and landscape renderings do not reflect finished selections





**LOUDERMILK**  
CUSTOM HOMES



FRONT ELEVATION

5271 Lake Forrest Drive

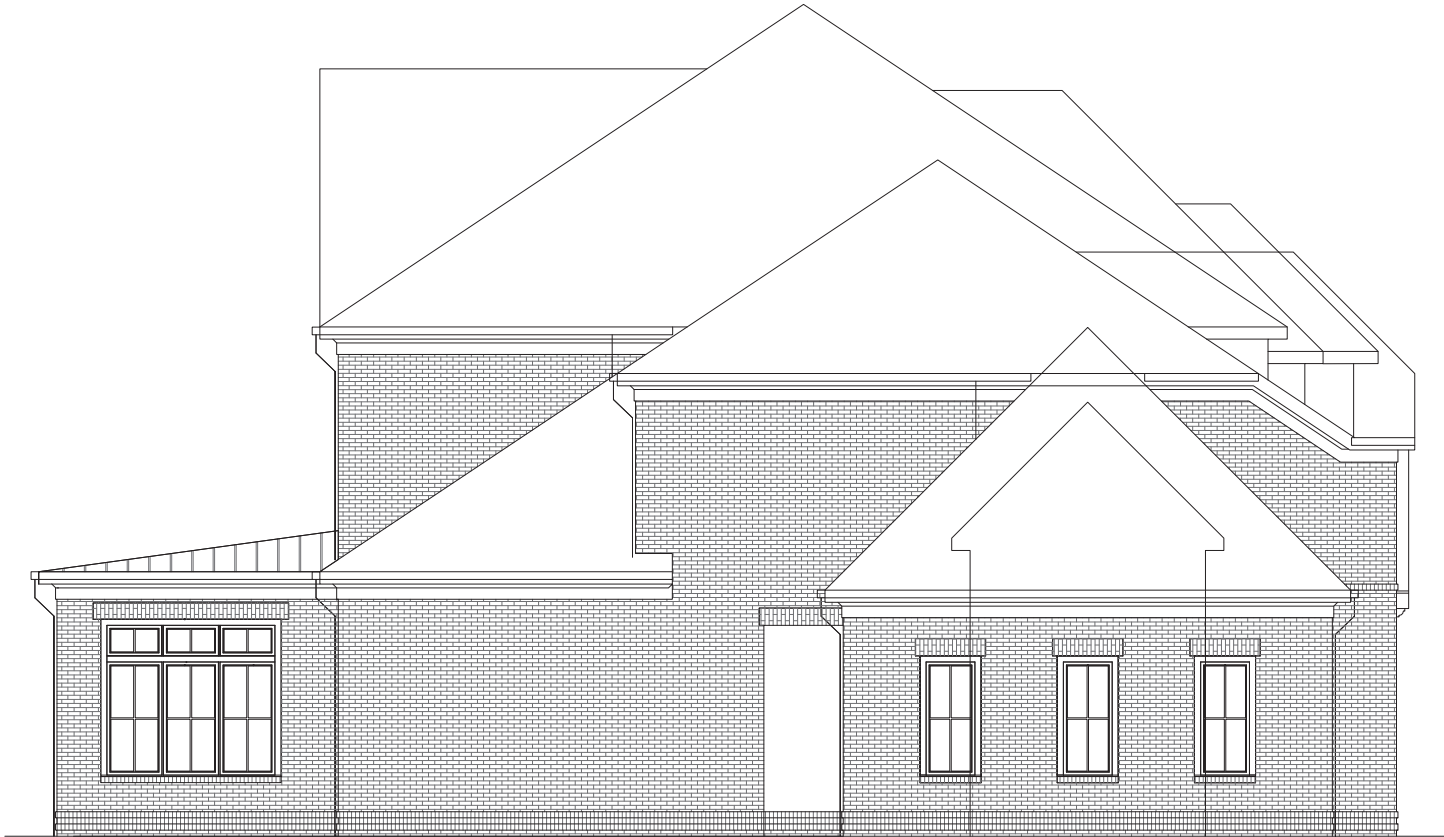
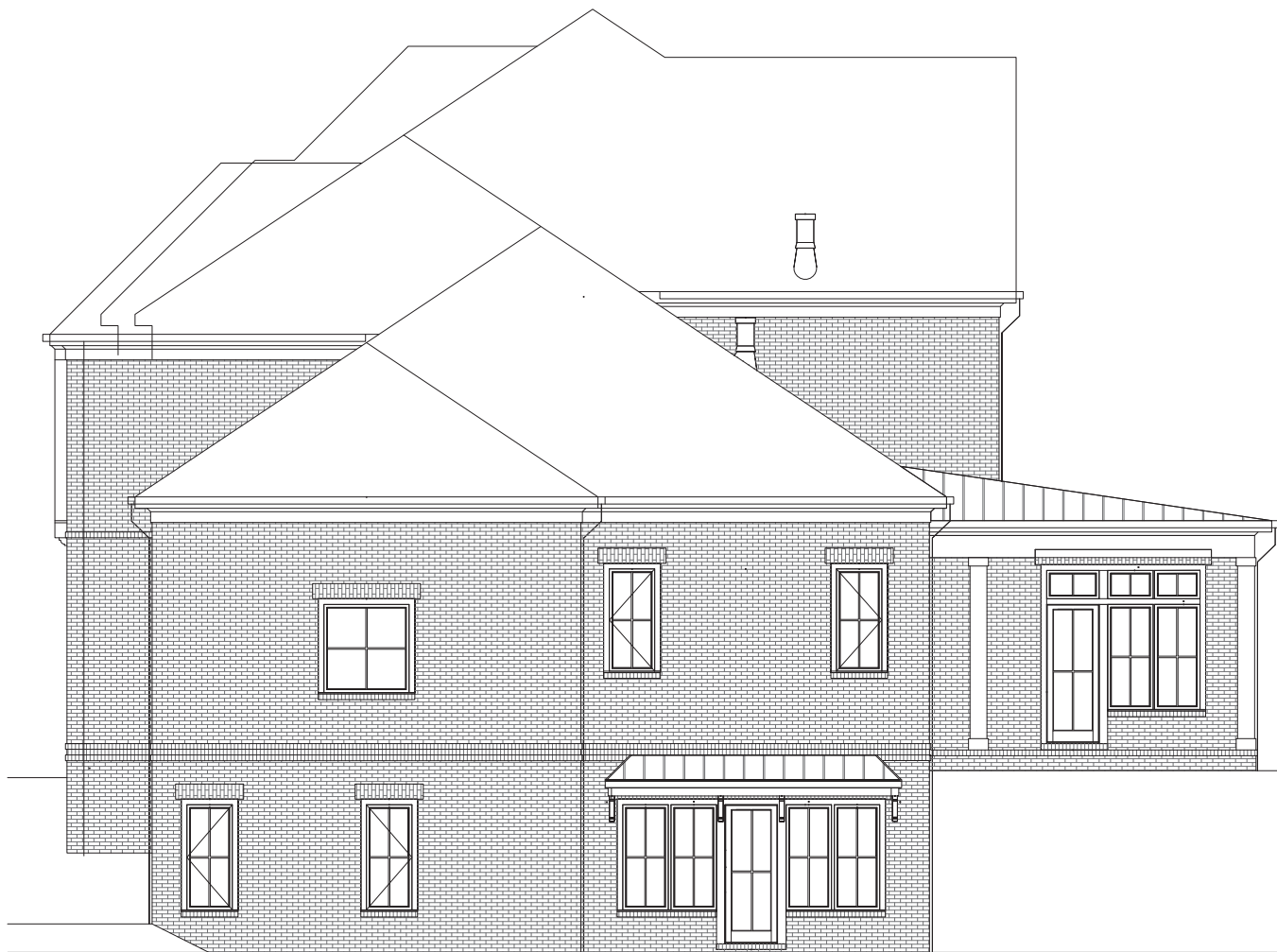
[www.loudermilkhomes.com](http://www.loudermilkhomes.com) | office: 770.485.2600 | email: [info@loudermilkhomes.com](mailto:info@loudermilkhomes.com)

1827 Powers Ferry Road, Building 6, Atlanta, GA 30339

Architecture and landscape renderings do not reflect finished selections



**LOUDERMILK**  
CUSTOM HOMES



LEFT & RIGHT ELEVATIONS

5271 Lake Forrest Drive

[www.loudermilkhomes.com](http://www.loudermilkhomes.com) | office: 770.485.2600 | email: [info@loudermilkhomes.com](mailto:info@loudermilkhomes.com)

1827 Powers Ferry Road, Building 6, Atlanta, GA 30339

Architecture and landscape renderings do not reflect finished selections



**LOUDERMILK**  
CUSTOM HOMES



REAR ELEVATION

5271 Lake Forrest Drive

[www.loudermilkhomes.com](http://www.loudermilkhomes.com) | office: 770.485.2600 | email: [info@loudermilkhomes.com](mailto:info@loudermilkhomes.com)

1827 Powers Ferry Road, Building 6, Atlanta, GA 30339

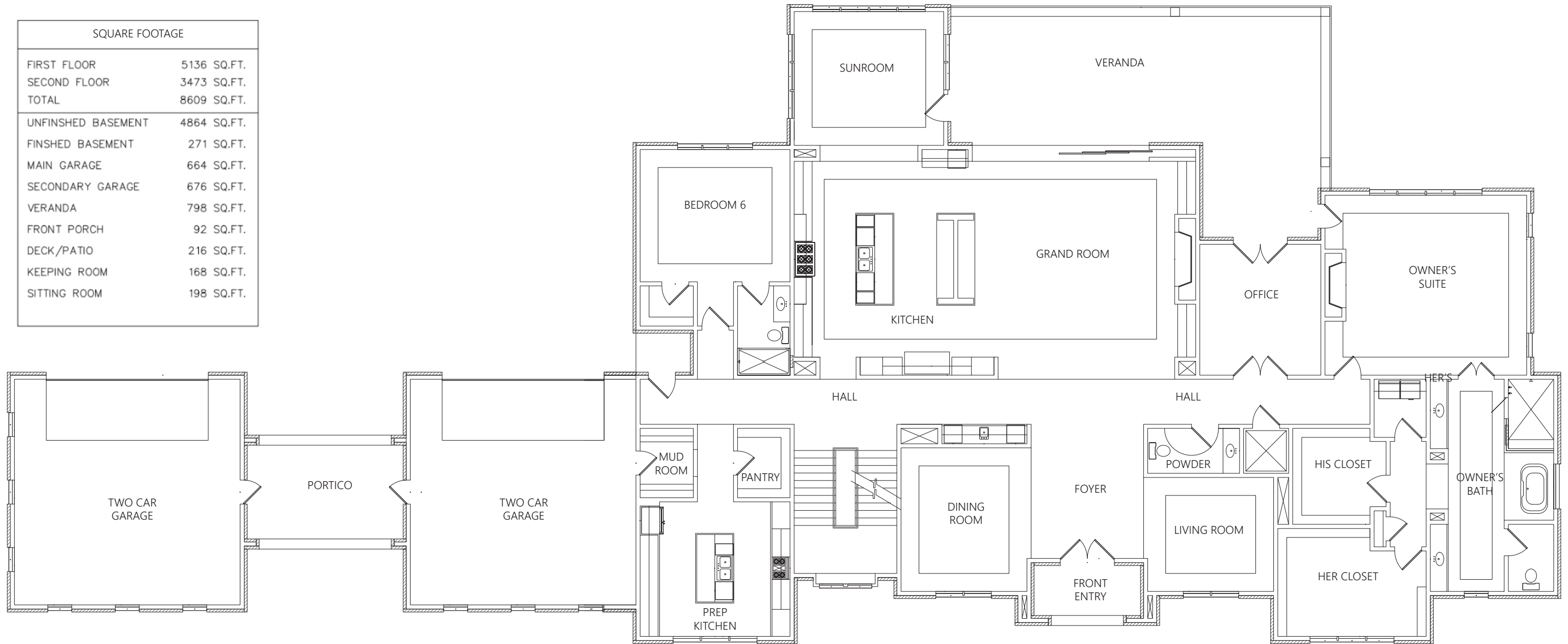
Architecture and landscape renderings do not reflect finished selections



# LOUDERMILK

CUSTOM HOMES

SQUARE FOOTAGE	
FIRST FLOOR	5136 SQ.FT.
SECOND FLOOR	3473 SQ.FT.
TOTAL	8609 SQ.FT.
UNFINISHED BASEMENT	4864 SQ.FT.
FINISHED BASEMENT	271 SQ.FT.
MAIN GARAGE	664 SQ.FT.
SECONDARY GARAGE	676 SQ.FT.
VERANDA	798 SQ.FT.
FRONT PORCH	92 SQ.FT.
DECK/PATIO	216 SQ.FT.
KEEPING ROOM	168 SQ.FT.
SITTING ROOM	198 SQ.FT.



FIRST  
FLOOR PLAN

5271 Lake Forrest Drive

[www.loudermilkhomes.com](http://www.loudermilkhomes.com) | office: 770.485.2600 | email: [info@loudermilkhomes.com](mailto:info@loudermilkhomes.com)

1827 Powers Ferry Road, Building 6, Atlanta, GA 30339

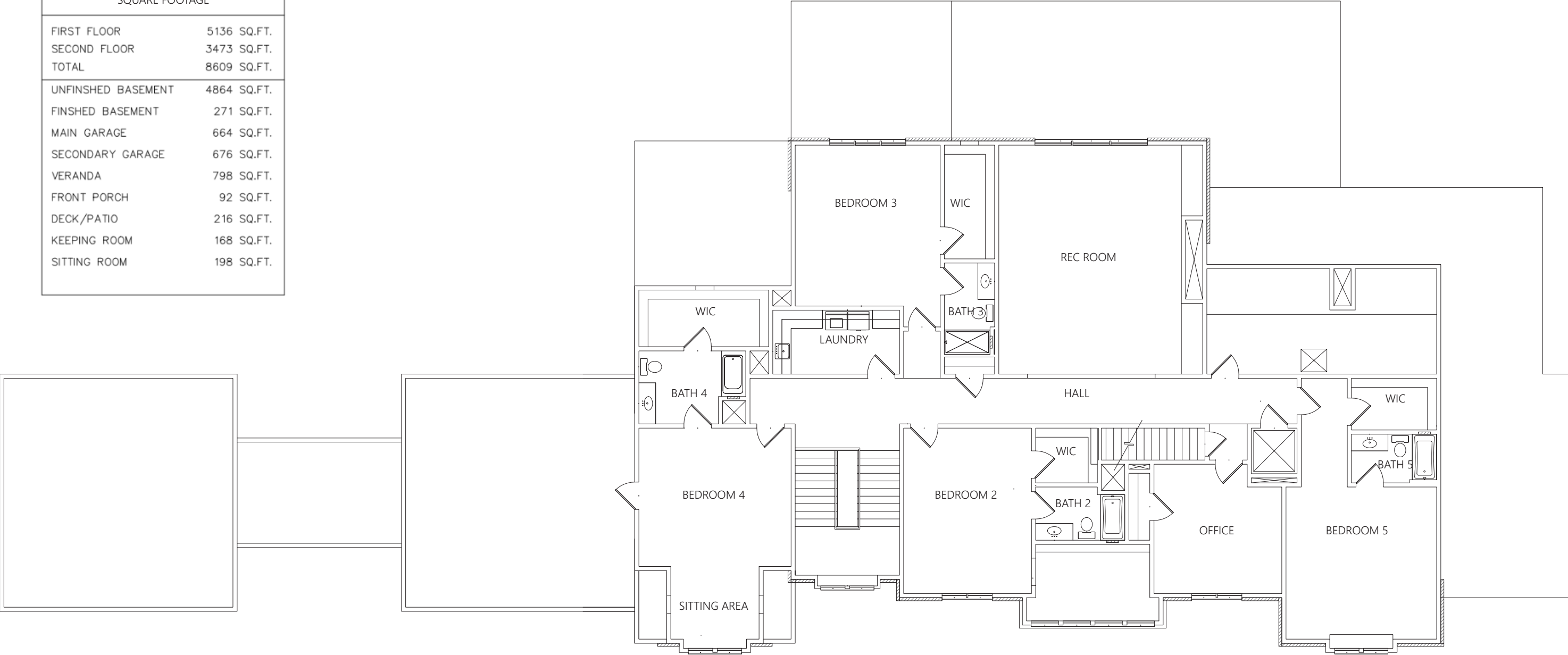
Architecture and landscape renderings do not reflect finished selections



# LOUDERMILK

CUSTOM HOMES

SQUARE FOOTAGE	
FIRST FLOOR	5136 SQ.FT.
SECOND FLOOR	3473 SQ.FT.
TOTAL	8609 SQ.FT.
UNFINISHED BASEMENT	4864 SQ.FT.
FINISHED BASEMENT	271 SQ.FT.
MAIN GARAGE	664 SQ.FT.
SECONDARY GARAGE	676 SQ.FT.
VERANDA	798 SQ.FT.
FRONT PORCH	92 SQ.FT.
DECK/PATIO	216 SQ.FT.
KEEPING ROOM	168 SQ.FT.
SITTING ROOM	198 SQ.FT.



SECOND FLOOR PLAN

5271 Lake Forrest Drive

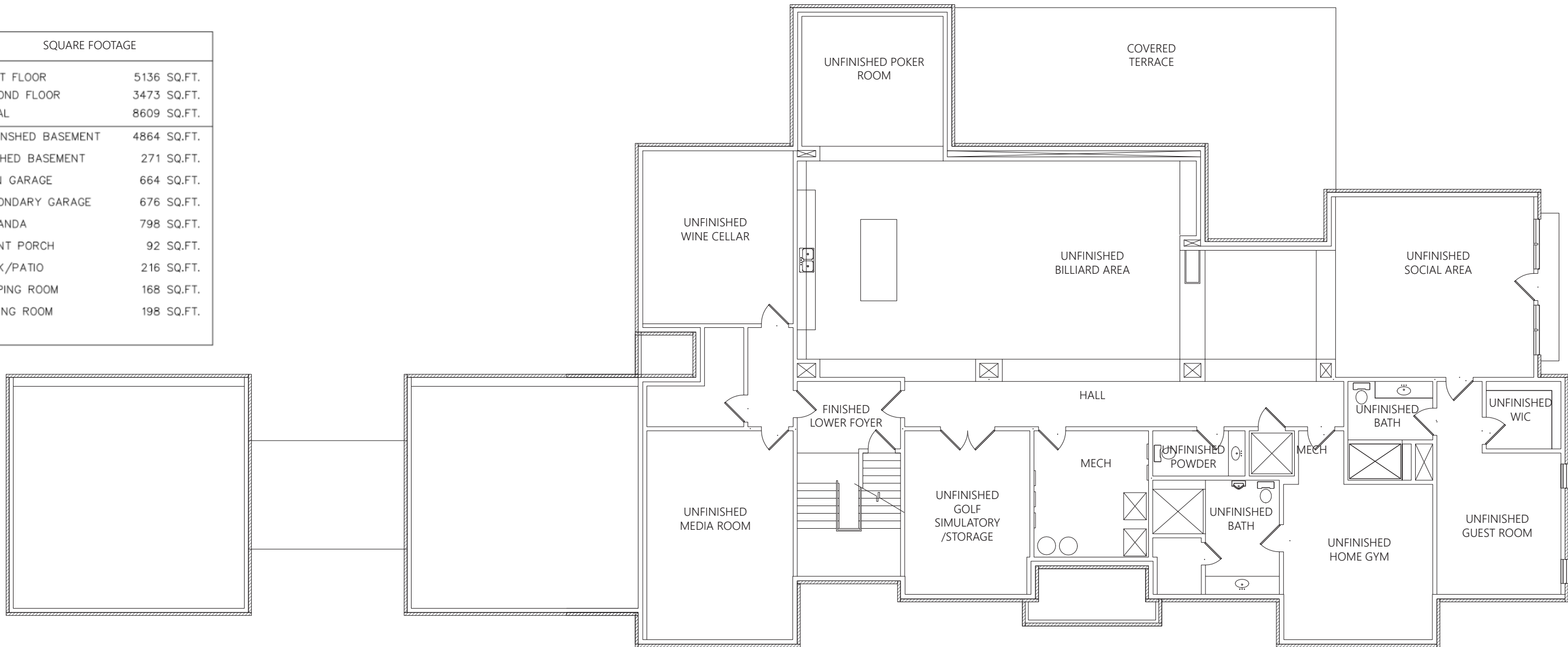
www.loudermilkhomes.com | office: 770.485.2600 | email: info@loudermilkhomes.com  
 1827 Powers Ferry Road, Building 6, Atlanta, GA 30339  
 Architecture and landscape renderings do not reflect finished selections



# LOUDERMILK

CUSTOM HOMES

SQUARE FOOTAGE	
FIRST FLOOR	5136 SQ.FT.
SECOND FLOOR	3473 SQ.FT.
TOTAL	8609 SQ.FT.
UNFINISHED BASEMENT	4864 SQ.FT.
FINISHED BASEMENT	271 SQ.FT.
MAIN GARAGE	664 SQ.FT.
SECONDARY GARAGE	676 SQ.FT.
VERANDA	798 SQ.FT.
FRONT PORCH	92 SQ.FT.
DECK/PATIO	216 SQ.FT.
KEEPING ROOM	168 SQ.FT.
SITTING ROOM	198 SQ.FT.



BASEMENT  
FLOOR PLAN

5271 Lake Forrest Drive

[www.loudermilkhomes.com](http://www.loudermilkhomes.com) | office: 770.485.2600 | email: [info@loudermilkhomes.com](mailto:info@loudermilkhomes.com)

1827 Powers Ferry Road, Building 6, Atlanta, GA 30339

Architecture and landscape renderings do not reflect finished selections