



BLUE HERON WALK LOT 6

Architecture and landscape renderings are for representation only and do not reflect finished selections. Furniture layout is for reference only and not included in sales price

www.loudermilkhomes.com | office: 770.485.2600 | email: info@loudermilkhomes.com
1827 Powers Ferry Road, Building 6, Atlanta, GA 30339



LOUDERMILK
CUSTOM HOMES

BLUE HERON WALK LOT 6

Architecture and landscape renderings are for representation only and do not reflect finished selections. Furniture layout is for reference only and not included in sales price

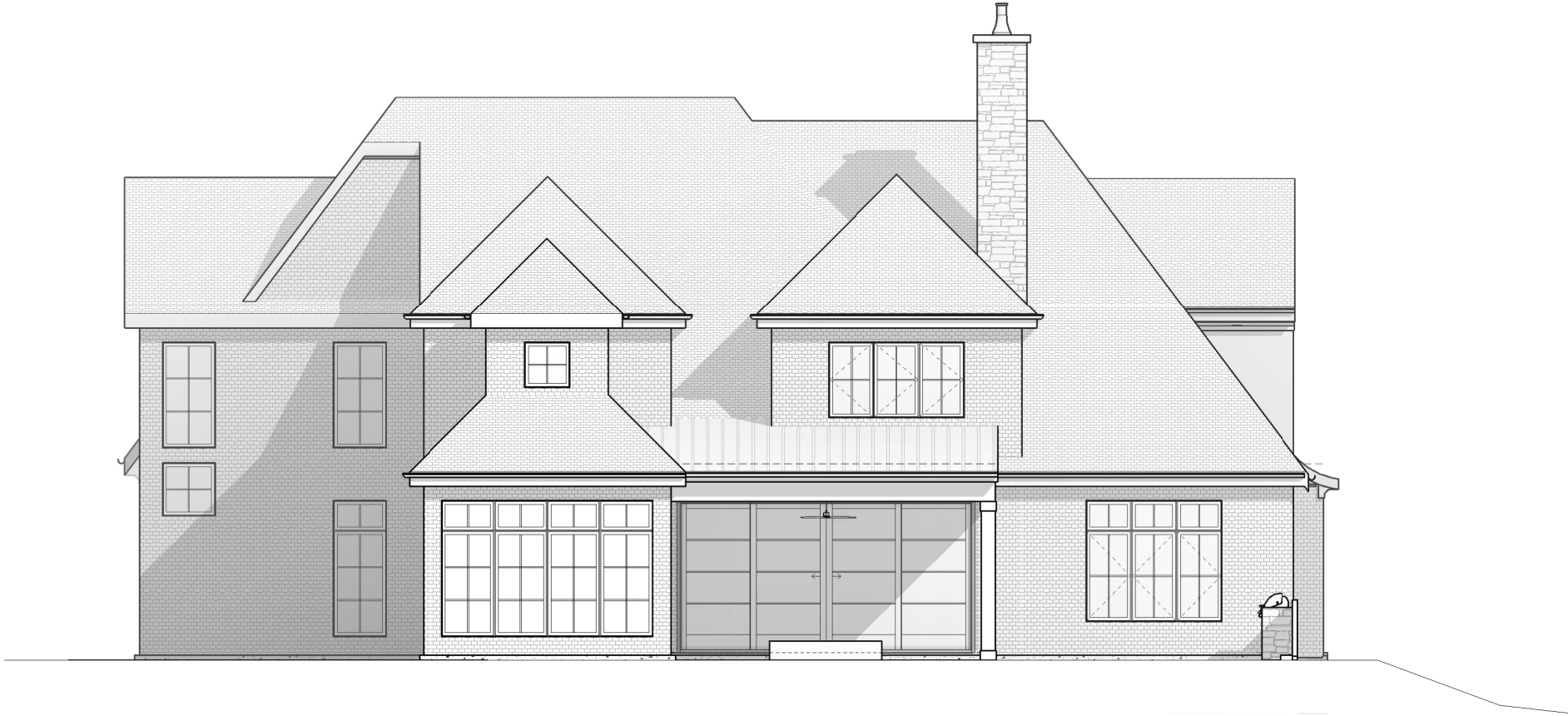




FRONT ELEVATION

BLUE HERON WALK LOT 6

www.loudermilkhomes.com | office: 770.485.2600 | email: info@loudermilkhomes.com
1827 Powers Ferry Road, Building 6, Atlanta, GA 30339
Architecture and landscape renderings do not reflect finished selections

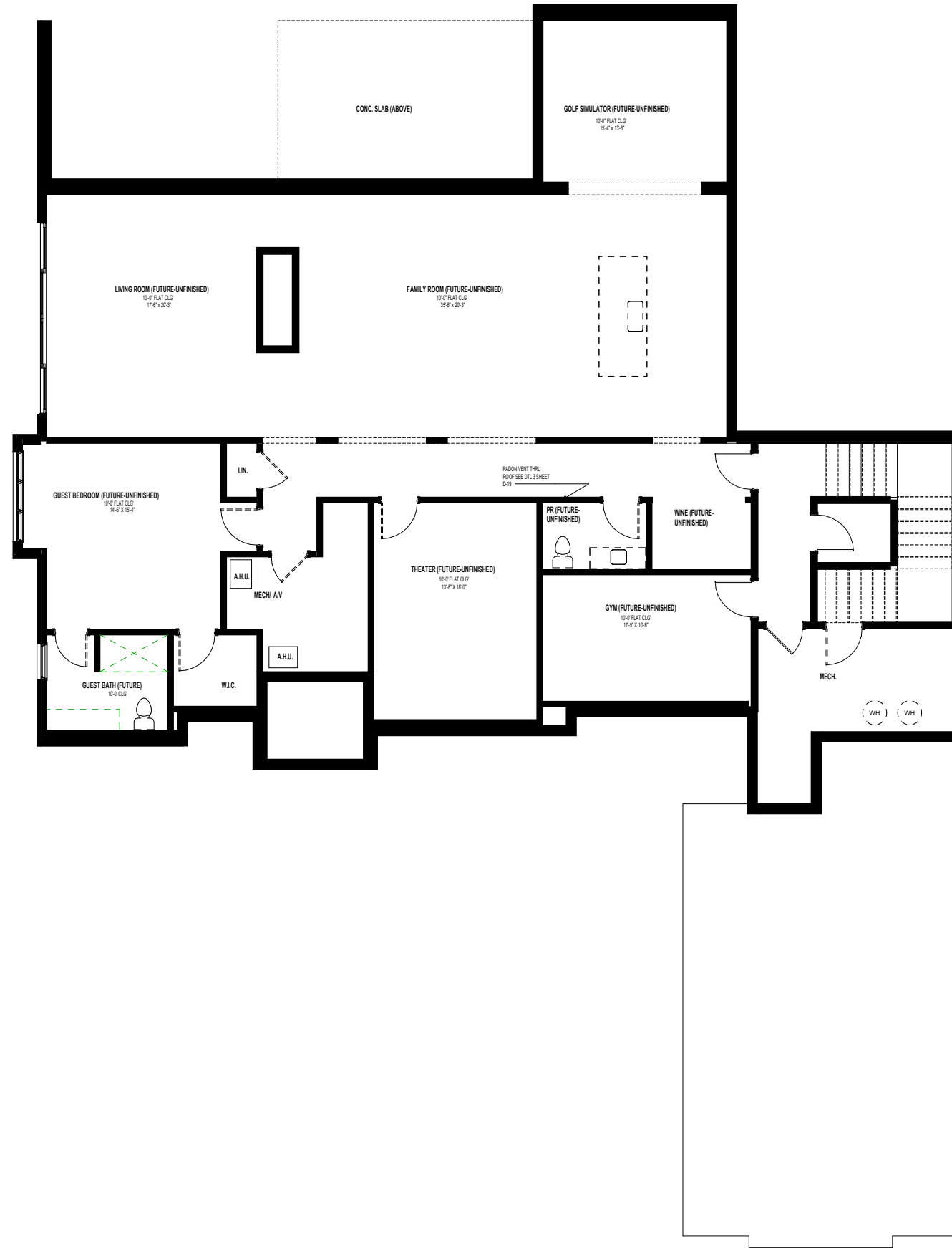


REAR ELEVATION

BLUE HERON WALK LOT 6

www.loudermilkhomes.com | office: 770.485.2600 | email: info@loudermilkhomes.com
1827 Powers Ferry Road, Building 6, Atlanta, GA 30339
Architecture and landscape renderings do not reflect finished selections

LOUDERMILK
CUSTOM HOMES



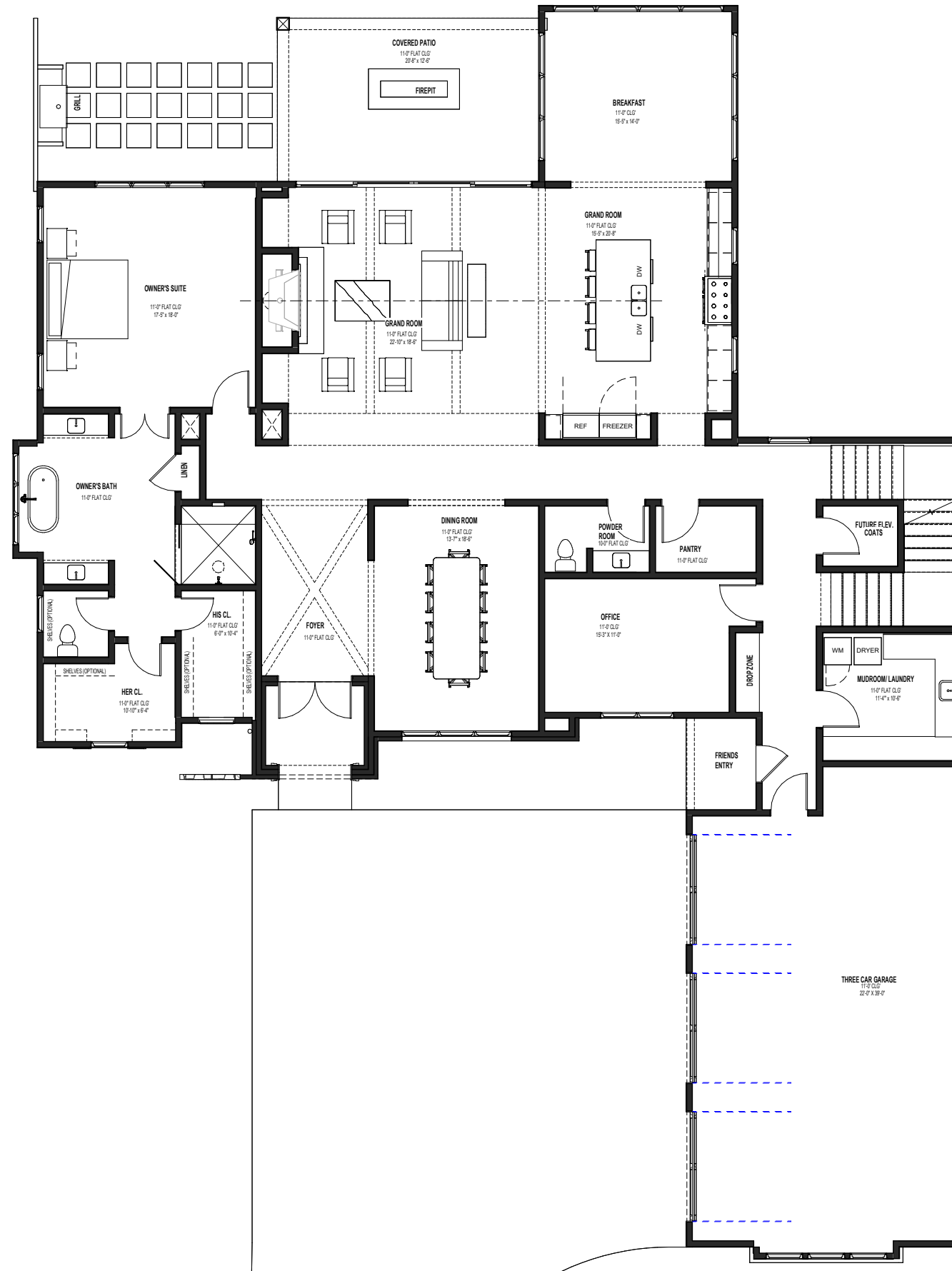
AREA CALCULATIONS

FIRST FLOOR	3,581 SQFT.
BASEMENT FLOOR	2,662 SQFT.
TOTAL FINISHED	6,243 SQFT.
TWO CAR GARAGE	594 SQFT.
FRONT PORCH	155 SQFT.
FRIEND'S ENTRY PORCH	70 SQFT.
COVERED UPPER PATIO	635 SQFT.
PARTIAL-COVERED LOWER PATIO	89 SQFT.
COVERED LOWER PATIO	635 SQFT.
UNFINISHED BASEMENT	328 SQFT.
TOTAL UNDER ROOF	8,749 SQFT.

BASEMENT
FLOOR PLAN

BLUE HERON WALK LOT 6

www.loudermilkhomes.com | office: 770.485.2600 | email: info@loudermilkhomes.com
1827 Powers Ferry Road, Building 6, Atlanta, GA 30339
Architecture and landscape renderings do not reflect finished selections



AREA CALCULATIONS	
FIRST FLOOR HEATED	3,364 SQFT.
SECOND FLOOR HEATED	2,242 SQFT.
SECOND FLOOR BONUS ROOM	472 SQFT.
LOWER LEVEL HEATED	92 SQFT.
TOTAL HEATED	6,170 SQFT.
UNFINISHED LOWER LEVEL	3,096 SQFT.
THREE CAR GARAGE	914 SQFT.
COVERED PORCH	315 SQFT.
COVERED ENTRY	114 SQFT.
BREEZEWAY	0 SQFT.
TOTAL UNDER ROOF	10,609 SQFT.

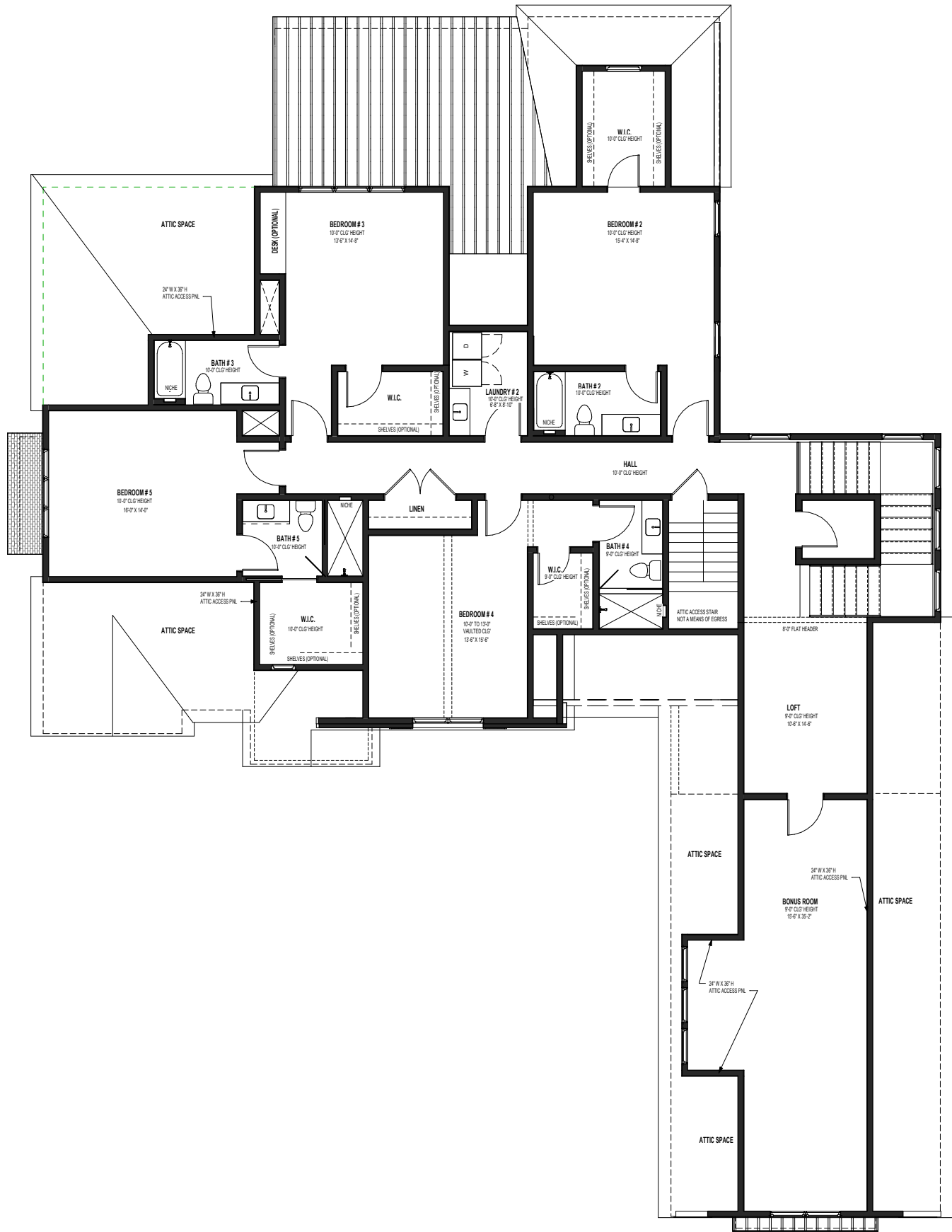
FIRST FLOOR PLAN

BLUE HERON WALK LOT 6

www.loudermilkhomes.com | office: 770.485.2600 | email: info@loudermilkhomes.com
 1827 Powers Ferry Road, Building 6, Atlanta, GA 30339
 Architecture and landscape renderings do not reflect finished selections

LOUDERMILK
CUSTOM HOMES

AREA CALCULATIONS	
FIRST FLOOR	3,581 SQFT.
BASEMENT FLOOR	2,662 SQFT.
TOTAL FINISHED	6,243 SQFT.
TWO CAR GARAGE	594 SQFT.
FRONT PORCH	155 SQFT.
FRIEND'S ENTRY PORCH	70 SQFT.
COVERED UPPER PATIO	635 SQFT.
PARTIAL-COVERED LOWER PATIO	89 SQFT.
COVERED LOWER PATIO	635 SQFT.
UNFINISHED BASEMENT	328 SQFT.
TOTAL UNDER ROOF	8,749 SQFT.



FIRST
FLOOR PLAN

BLUE HERON WALK LOT 6